

Occupational Science Occupational Therapy

2012 Retrospective
annual report



a place of mind

THE UNIVERSITY OF BRITISH COLUMBIA
FACULTY OF MEDICINE



create
inspire
sustain

a scholarly community to educate
exemplary occupational therapists
and advance research in occupation



The Power of

O n e

the support of many



Welcome to the 2012 annual report from the Department of Occupational Science and Occupational Therapy – a retrospective list of scholarly, educational, and academic activities. As this report illustrates, members of the Department worked energetically toward individual and collective goals, to advance their own learning and contribute to the study of human occupation and advance the evidence base for the practice of occupational therapy.

The beginning of the year brought me a new title: department head, and new responsibilities. Settling into a lengthy “to do” list on January 2, I contemplated how the year might unfold. According to that authoritative source, Answers.com, January is named after the Roman god Janus. Janus was known as the guardian of doors and gates; he presided over new beginnings and had two faces, one on the front of his head and another on the back. I had been granted the privilege of guardian of the OSOT gate – and

being January, looked forward to the future and glanced back to learn from and build upon the past. Any other interpretation of being “two-faced” simply would not be a desirable new beginning!

One early change was the appointment of an Associate Head, designed to distribute the academic leadership and administrative responsibilities as the Department worked toward its strategic goals. Dr. Susan Forwell agreed to take on the role, and I know she will create and fulfill this new portfolio with her usual aplomb.

The process for promotion and tenure at the University is involved and extensive, taking several months of review at multiple levels before the decision is made by the President. Consequently, the applause for faculty members who achieve these milestones is similarly prolonged. Warm congratulations were extended to Ms. Donna Drynan, Academic Fieldwork Coordinator, and Mr. Michael Lee, MOT Curriculum Coordinator, both of whom received tenure and promotion to Senior Instructor; and to Dr. Bill Miller, upon his promotion to Professor.

Donna and Michael were recognized for their commitment and teaching excellence in the professional program leading to the Master of Occupational Therapy (MOT) degree. Among their many other projects, Donna led initiatives in inter-professional education as the Director of Practice Education in the College of Health Disciplines, while Michael contributed



to the educational program for foreign educated occupational therapists.

Bill's record of outstanding research and mentorship contributed to his rise to full professor. He established an externally-funded, interdisciplinary, program of research on wheeled mobility that will change the way wheelchairs are designed and used, enabling wheelchair users to engage more effectively in their chosen occupations. Many doctoral students have developed superior skills in mobility

research under Bill's guidance.

Ten new research grants were received in 2012 and the Department's eleven faculty members are engaged in projects valued at more than \$10 million in new and ongoing grants. We published an average of five peer-reviewed papers per active researcher, almost twice that number in conference presentations, and contributed chapters to major textbooks in the field. Look for the publications list later in this report – lots to read!

On occasion I hear occupational therapy students struggling to articulate a concise definition of their chosen profession. This was not the case in 2012. The second year MOT class combined their talents to create a YouTube video as their entry for the national gOT Spirit Challenge for occupational therapy programs in Canada. Their 3-minute film "Because of Occupational Therapy I Can" not only won the competition and illustrated

their concept of occupational therapy, it received international attention with over 100,000 views at the time this report was written.

In our rehabilitation sciences programs, 10 students graduated with MRSc, MSc, and PhD degrees. The productivity of the research graduate students continues to climb, with a threefold increase in studentship funding and over 80 publications and presentations in the past year. By disseminating their work, they shape the future of rehabilitation. Projects range from very practical studies aimed at solving a clinical problem, to advancing knowledge in the basic sciences and societal influences on occupation. Theses and projects are listed in the program summaries presented later in this report. Perhaps you'll see a project that will inform your practice – you can find each graduate thesis in the University's electronic information repository called cIRcle, at <https://circle.ubc.ca>.



I extend sincere thanks to the many donors who contributed to student awards and research projects in occupational therapy. New awards were established for MOT students and the OSOT Clinical Research Initiative Fund 'graduated' to its second year. This fund will help cover the expenses involved in student research and pilot projects designed by faculty members. Please don't hesitate to contact me if you have "a dollar and a dream" to advance learning or scholarly activity.

Like Janus, look two ways with us; look back at what our community achieved in 2012 and be part of our future. I invite you to take a moment to review this annual report and learn more about the thriving community of occupational scientists and occupational therapists centred at UBC. Never underestimate the power of one – and the extraordinary accomplishments when they cultivate community.

Catherine Backman

Catherine Backman, PhD, FCAOT
Professor & Head

Agents of Change:

Our OT Community



Melinda Suto, PhD
Assistant Professor

Excellence in Knowledge Exchange

2012 was a banner year for research conference contributions in my primary interests (psychosocial aspects of bipolar disorders; leisure; critical theory; stigma) and developing research streams e.g., stroke recovery. I presented 6 sole and/or co-authored papers at two occupational science conferences: the Canadian Society of Occupational Scientists and the Society for the Study of Occupation: USA. At the Canadian Association of Occupational Therapists conference, I presented 11 sole or co-authored papers and posters that represented collaboration with students (MOT, PhD), clinicians and colleagues. I was awarded a UBC International Research Collaboration Workshop grant to advance CREST.BD's progress on developing a Delphi study of self-management strategies for people living with bipolar disorder.

CREST.BD: www.crestbd.ca

Innovator in Online Learning

In 2012, funded by a UBC Faculty Development Initiatives grant, Mary Clark, Clinical Assistant Professor (OSOT) and I conducted a needs assessment of instructors' online facilitation skills. This led to the first of two pilot 'boot camps' to develop or enhance the facilitation skills of new and current online instructors. The growing use of learning technologies in higher education prompted the need for this project to grow the capacity of instructors who teach only or partly online. Evaluations of the Fall 2012 four-week online boot camp showed participants' found it beneficial and valued their peers' enthusiasm and support in the online community that developed. Main recommendations for the second pilot included extending the length of the boot camp to six weeks to manage time constraints, and modifying the workload. In 2012, I also contributed to the evaluation design and a conference presentation of the 'Research Relays,' a free webinar series that provides a forum for graduates of the Master of Rehabilitation Sciences Online program to disseminate their research. These relays were initiated by Mary Clark in the Spring of 2012..

For more information on the Master of Rehabilitation Sciences Online Programs, visit: <http://www.mrsc.ubc.ca/>.

For information on the Research Relays, visit: http://www.mrsc.ubc.ca/site_page.asp?pageid=177



Julia Rozanova, PhD
Assistant Professor

Advancing a Program of Research on Healthy Aging

I consider one of my achievements for 2012 the further development of my SSHRC-funded research focussing on digital dating in later life as part of the cultural phenomenon of successful aging. This project led to a paper presentation of initial results at the International Conference on Global Cultural Communities at Linneaus University, Sweden (October 2012), co-written with my collaborators, Dr. Laura Hurd Clarke, Associate Professor from the School of Human Kinetics, and Dr. Mineko Wada, a postdoctoral researcher. This was the first paper that originated from my first Tri-council grant, giving special meaning to this experience. I felt deeply honored and gratified to see my program of research coming to fruition and receiving international recognition, and to see Dr Wada, the first postdoctoral fellow I have mentored since coming to UBC, develop expertise in this new area of scholarship. Based on the thoughtful feedback we received from conference participants, we are finalizing the paper for submission to the journal Aging and Society.



Sue Stanton, MA, FCAOT
Associate Professor

Innovations in Wheeled Mobility

In 2012 I obtained funding for a randomized trial to investigate a novel method to improve manual wheelchair use. The intervention, entitled EPIC Wheels (Enhancing Participation In the Community by improving Wheelchair Skills), will teach wheelchair skills through a series of innovative lessons and activities using a computer tablet. This technology delivers a home-based program that enables individuals to proceed at their own pace while being monitored remotely by the trainer. This project was ranked #1 in the competition to the Canadian Institutes of Health Research.

For more information:

<http://millerresearch.osot.ubc.ca/research/participate/epic-wheels/>



Bill Miller, PhD, FCAOT
Professor



Michael Lee, MBA
Senior Instructor and
Curriculum Coordinator

De-stigmatizing Mental Illness with Students

The year 2012 marked the 2nd year of working with the Mental Health Awareness Club (MHAC), funded by the Teaching and Learning Enhancement fund. The MHAC is a student-led group whose aim is to promote mental health awareness on campus, and disseminate knowledge and resources to the student body. The group provides leadership opportunities for student members, as well as information workshops and other learning activities. In 2012, the MHAC expanded its mandate by launching a Mental Health Needs Assessment across the campus, employing participatory action research. The needs assessment identified various themes of concern to students when dealing with mental health issues, such as the pressure to meet expectations, the challenges associated with the transition to university, questions surrounding a sense of belonging, and a lack of awareness of mental health resources on campus. Preliminary results were presented at the Mental Health Symposium at UBC, and a presentation of final results will be made to key stakeholders to help foster a healthier learning environment on campus.

Empowerment and Employment Through Assistive Technology

This year I have been the principal investigator on a project aimed at evaluating the Equipment and Assistive Technology Initiative in BC, a program that provides funding for assessment, training, and acquisition of assistive technology for people with disabilities who are working towards employment. We found that the program is impacting lives by enabling people to participate more fully in society. It also helps people become engaged in volunteer activities, develop new skills and increases their ability to communicate. The final report will be available in June 2013. Funding was provided by SSHRC and the Federal Labour Market Participation Program. Evaluation website, <http://eatievaluation.sites.olt.ubc.ca/>, in June 2013.



Tal Jarus, PhD
Professor

Advocating for Equal Access to Education for All

In September 2012, I led a three-day international and interdisciplinary workshop at UBC which aimed to increase and share knowledge about the diverse challenges students with disabilities meet when they transition into and out of university, especially in the health and human service disciplines. Research experts from the UK, Norway, Sweden, Israel and Canada were in attendance to discuss how we as educators could support students in the academic and social aspects of their program, and can facilitate their practice education experiences. The outcome of the workshop was the creation of an international, interdisciplinary consortium collaborating to deconstruct the complex mechanisms that support inclusive professional education. The consortium's work will increase the social inclusion of people with disabilities, in particular in the workforce and society, and thus impact quality of life, social justice and the development of human capital.



Lyn Jongbloed, PhD, FCAOT
Associate Professor

Managing Pain for our Tiniest Patients

The highlight for the 2012 year was the completion of a clinical pilot randomized controlled trial evaluating the effects of a robot our team developed for managing pain in preterm infants in the neonatal intensive care nursery. Co-investigators were Dr. Karon MacLean (ICICS, UBC), Dr. JP Collet (Pediatrics), Dr. Anne Synnes (Pediatrics, Neonatology), Dennis Schweers, (PHSA Biomedical Engineering). The results from this small trial were used to support development of an industry ready version of the robot for use in the next phase of the research and the filing of a provisional US patent.



Liisa Holsti, PhD
Assistant Professor



Susan Forwell, PhD, FCAOT
Associate Professor

Bridging Research and Practice

I was very occupied with writing four book chapters in 2012. In the seminal textbook, Occupational Therapy for Physical Dysfunction, (7th edition), edited by M.V. Radomski and C.A. Trombly Latham, I was the lead author for the chapter on occupational therapy for people with neurodegenerative diseases. I was the sole author on a chapter related to fatigue and multiple sclerosis in the book Multiple Sclerosis and Related Disorders: Clinical Guide to Diagnosis, Medical Management, and Rehabilitation. And I wrote two chapters the first textbook solely dedicated to Multiple Sclerosis Rehabilitation, edited by M. Finlayson, and addressing the topics of self-care and domestic life, respectfully. In addition, I enjoyed the opportunity to travel as I presented 13 research papers and delivered four invited presentations at meetings in Edmonton, Quebec City, San Diego, and Stockholm.

Bringing Interprofessional Education Into the 21st Century

In 2012 I incorporated more formal interprofessional education into the MOT curriculum by adopting the Interprofessional Education Passport, an online tool that enables health and human service students to register for and keep track of their interprofessional learning. The Passport system provides a means to manage students' IPE learning activities, and assigns a point value representing the depth of interprofessional learning the activity provides students with, based on a standardized rubric. All OT students must now report 160 points and at least one of their experiences must be at the immersion level. This Passport system effectively embeds IPE into the Professional Practice stream of the MOT curriculum. This includes all students in year 1 to be part of the Interprofessional Health Mentors program. As well, more 'in class' exposure activities are being offered, including the Health Care Team Challenge, standard patient encounters, and a rheumatology module.



Donna Drynan, MEd
Senior Instructor and
Academic Fieldwork Coordinator



Catherine Backman, PhD, FCAOT
Professor

eHealth Ethics – Practicing Responsibly in the Digital Era

With help from a CIHR Catalyst grant, along with my Twitter-savvy research associate Anne Townsend, I started a new project in 2012 "Exploring eHealth Ethics and Multi-morbidity." With the array of online resources, apps, and social media, there is an ever-increasing amount of health care information available online. Plus, information can be contradictory and confusing for people concurrently managing multiple chronic conditions. eHealth technologies aim to engage and empower clients, but very little is known about the potential benefits and burdens. Our multidisciplinary team of investigators and client collaborators embarked on the first phase of the study, using qualitative methods and relational ethics to examine eHealth experiences from the perspectives of clients and health professionals.

Clinical Assistant Professor: Darlene Arsenault, Shannon Berg, Marie Bozzer, Kim Calsaferrri, William Chan, Mary C. Clark, Lori Cyr, Alexis Davis, Andrew Neale, Barbara Porter, Brenda Robinson, Cheryl Sheffield, Sarah Sinanan, Astrid St. Pierre, Linda Stan, Corey Stock, Phyllis Straathof, McC-Jones, Jillian Rihela, Lori Roxborough, Joyce Trysennaar, Trish White **Clinical Instructor:** Narges Adab, Jennifer Amell, Sacha Kyle, Judith Dueck, Leslie Duran, Kim Durlacher, Jody Edamura, Stephen Epp, Debra Field, Kent Friesen, Jennifer Gellis, MacDonald, Margot Mackay, Yenna Mansfield, Colleen McCain, Barbara McNair, Mark Metzger, Deborah McMan, Sneha Shankar, Cara Shorter, Janet Shortreed, Leslie Smith, Rochelle Stokes, Wendy **Professor Emeritus:** Ginny Fearing

Clinical Faculty:

Over 300 occupational therapists in BC are affiliated with the Department, half as clinical faculty members. We welcomed with 30 new appointments and seven promotions were approved in 2012. Clinicians provided 234 placements to MOT students, 900 hours of teaching in workshops, seminars and tutorials, and volunteered 200 hours to Admissions, Awards and Clinical Faculty Affairs Committees.

Thank you

Christine Carpenter, Lynda McCloy
 Poon, Tim Readman, La, Kathleen Scalzo, Jennifer Se/taivire, Carol Levy, Claudia Lim, Wendy Lintott, Rona M
 Joanna Chung, Liza De Silva, Linda Del Fabro-Smith, Taryn D
 Daechsel, Patricia Erlendson, Jan Gauthier, Min Kyi, Diana M
 McCuaig, Alison McLean, Patricia Mortenson, William Mortenson,

Rajni Dhiman, Janice Duivestein, Jodi Fischer, Cynthia Fraser, Mary-Ann Yulks, Susan Garret, Teresa Green, Sandra Hale, Irene Harris, Wilma Jelleys, Darene Toal-Sullivan **Clinical Assistant Professor Emeritus:** Patricia B. Stamante, Arsenault, Desiree Betz, Jeanette Boily, Heather Boyes, Heather B. Yurett, Pamela Capern, Krista Carwana, Emmeline Chang, Alison Gerlach, Susan-Leigh Gmitroski, Margaret Graham, Sandra Haskett, Julia Henderson, Amanda Ho, Joyce Mills, Karen Mills, Marie Nelson, Tracey Newlands, Carol N. O'Driscoll, Emily Ng, Gordon Ng, Jill Olson, Gretchen Olund, Caitlin Oosterbaan, Kanchan Pandey, Josephine Thompson, Patricia Van Kuyk, Kevin Waldorf, Nancy Wellwood, Miriam Wickett, Kristina Wilson, Anastasia Wong, Jeanne Yiu **Clinical Professor:** Mary Konkin, Deirdre Lee, Sandra Leznoff, Sonja Magnuson, Margaret Ra Bressler, Catherine Busby, Mary J. Clark, Patricia Corbett, Dawn Sarabjeet Charchun, Irene Cheung, Mia Chin, Jo-Anne Chisholm, Ho, Sandeep Jagday, Denise Kendrick, Marc Landry, Christine Olund, Caitlin Oosterbaan, Kanchan Pandey, Josephine

Chris Courtney
Award for
Excellence
in Fieldwork
Education

The Chris Courtney Award for Excellence in Fieldwork Education was established in memory of Chris Courtney, an occupational therapist who died unexpectedly in 1996. She was passionate about educating students in the field. In 2012 the award was presented to Lisa Engel from Nanaimo Regional General Hospital. Lisa was nominated by second-year MOT student Lindsay Richards.

Congratulations Linda!

Affiliates and Associates

Professor Emeritus: Isabel Dyck

Assistant Professor Emeritus:

Lila Quastel

Honorary Professor: Karen Hammell

Adjunct Professor:

Tara Gaertner
Sharon Smith
Jaimie Borisoff
John Oliffe
Jenny Young

Research Associate: Anne Townsend

Associate Faculty Member:

Hugh Anton (Medicine)
Andrei Krassioukov (Rehabilitation Medicine)
Ian Mitchell (Computer Science)
Bonnie Sawatzky (Medicine)
Andrea Townson (Rehabilitation Medicine)

Postdoctoral Fellow:

Mineko Wada
Paula Mahon
Claudine Auger
Seterah Ghahari
Shahriar Parvaneh

Research Staff:

Elmira Chan
Kimberley Fink-Jensen

Visiting Scholars:

Kirk Reed, Head
Department of Occupational Science
& Therapy
AUT University, New Zealand

Sofia Vikstrom, Director
Occupational Therapy Program
Karolinska Institute, Sweden

Administration

Plugged in to the Department

Staff are the backbone of Department operations. A number of staff changes took place in 2012. We welcomed new members to the team: Claire Carigi replaced Andrea Walus as the Administrative Manager of the Rehabilitation Sciences Online Program; Tiffany Moore came on board when Sally Clark stepped down as the Assistant for the Rehabilitation Sciences Research Graduate Program, and Sarah Henderson joined us in the newly created role of MOT Program Assistant. We said good-bye to Dr Kate Keetch, who completed an appointment as Grants Facilitator during Cynthia Hsieh's maternity leave.

Of particular note, we bid a fond farewell to Jean Hsieh, Fieldwork Secretary, after 34 years of service to the School of Rehabilitation Sciences and Department of Occupational Science & Occupational Therapy. Her dedication and hard work were honoured with a celebration tea attended by former faculty and staff members. Dr Ross MacGillivray, Vice-Dean, Faculty of Medicine, who represented the Faculty of Medicine's Dean's office, was on hand to present Jean with a plaque to acknowledge her extended service to UBC. We wish departing staff all the best in their future endeavours.



Claire Carigi

Administrative Manager, Rehabilitation Sciences Online Program

Rehana Frankland

MOT Program Manager

Sarah Henderson

MOT Program Assistant

Tracy Henderson

MOT Curriculum Assistant

Cynthia Lin Hsieh

Research Grants Facilitator

Kathryn Bell Lewis

Administrative Manager

Mark Meheriuk

Information Systems Coordinator

Tiffany Moore

Graduate Assistant, Research Graduate Program in Rehabilitation Sciences

Heather Swallow

Departmental Assistant and Clinical Faculty Assistant



Jean Hsieh



Sally Clark



Kate Keetch



Andrea Walus

Graduates:

Congratulations to the MOT Class of 2012

Forty-seven occupational therapists enter the field

Rachel Abel, Jaskirn
Bains, Justine Barnett,
Thea Borserio, Jennifer
Brown, Ruth Calder, Andrea
Chamberlain, Jessica Cheung,
Brian Condon, Carly Crider, Cassandra
Crosby, Jerica Ditson, Krista Douglas,
Holly Enns, Sonja Feddes, Shelby
Fomenoff, Alison Gage, Karin
Gavac, Brittany Guile, Jacquelyn
Hannaford, Brittney Hugelshofer,
Megan Hunter, Vanessa Hunter, Lena
Khoshbin, Melia Kinkade, Jennifer
Loffree, Michelle Lui, Elizabeth
MacDonald, Nicola Mark,
Melissa Maron, Barbara
Ann McFarlane,

Tanya Neuert, Kirsten
Oldale, Brian O'Rourke,
Danielle Rae,
Lindsay
Richards,
Sarah
Russell,
Susan
Schincariol,
Rebecca
Simms, Mina
Thomas,
Jason Thome,
Laura Tighe,
Renee van
Doorninck,
Kristine
Vaughn, Jill
Wong, Shelly
Zonneveld



Alumni:

Salim Janmohamed, BSc(OT) Class of 1998

Salim Janmohamed, MBA, BSc(OT), a 1998 graduate of the occupational therapy professional program, was featured in the December issue of the Business in Vancouver's "Forty under 40" issue. Salim is the Managing Director for Community Therapists, a private sector rehabilitation provider headquartered in Burnaby. He was one of 40 young, outstanding BC entrepreneurs and executives profiled. Individuals recognized in this issue are from a wide range of industries and have demonstrated excellence in business, leadership and community contributions. Salim, in particular, was credited for his managerial success at Community Therapists, an interdisciplinary rehabilitation practice that provides clinic- and community-based services to individuals and organizations. Their sources enable people to function more fully in their home, school and work environments. Business in Vancouver praised Salim's acumen: he decreased company overhead and doubled



revenue and personnel. Today, Community Therapists is the largest privately operated community-based rehabilitation practice in British Columbia with over 90 healthcare and administrative staff including occupational therapists, physiotherapists, kinesiologists and operations staff. Salim's motivation to make a difference in people's lives was recognized as a driving force for his success.

The Department of Occupational Science and Occupational Therapy is proud of its many alumni, from eight different programs over the past 48 years. The BSR, BSc(OT) and MOT programs have graduated superior practitioners in occupational therapy. The BSR(OT) degree completion program, Graduate Certificate in Rehabilitation, and MRSc programs, have helped working professionals to acquire new skills and credentials to advance practice. And the MSc and PhD research programs are producing exemplary rehabilitation scientists to advance the discipline and discover new approaches to enable occupation and promote health. Salim Janmohamed is just one example of the impact UBC grads have on the community.

Awards:

The following individuals have received special recognition for their academic merit, quality of work and/or service to the OT community. Congratulations to all.

Clinical Faculty

Canadian Association of Occupational Therapists Award of Merit:

[Les Smith](#)

Acknowledgement for significant contributions to the profession of occupational therapy

National Spinal Cord Injury Annual Conference, People's Choice Award

[Dianna Mah-Jones](#)

/ 2nd Place Poster Award: The poster titled "The Finger: An aid for digital rectal stimulation" received recognition for innovation

Queen Elizabeth II Diamond Jubilee Medal: This prestigious medal is presented by the Governor General of Canada to a deserving recipient for the dedicated work that contributes to the safety of Canadians

[Twyla Ross](#)

OT Education and Mentorship Award: This award is presented by the Provincial Paediatric Therapy Recruitment and Retention Coordinator's Office and is given for provision of education in the form of presentations, website information, published family and therapist resources, as well as mentorship to community therapists in the areas of seating, positioning and assistive technology

[Roslyn Livingstone](#)

Canadian Association of Gerontology Annual Conference, Best

[Ben Mortenson](#)

Postdoctoral Poster Award: This award is sponsored by the CIHR Institute of Aging.

BC Health Association Legacy Award: This award is endowed by the former British Columbia Health Association and is given annually to an individual or group who has made a significant contribution to the development of health policy, health leadership, or health care governance province-wide.

[Kim Calsferri](#)

MSc & PhD Students

NSERC Alexander Graham Bell Canada Graduate Scholarship: Provides financial support to outstanding students pursuing master's or doctoral studies in a Canadian university. The Government of Canada established these prestigious scholarships to ensure a reliable supply of highly qualified personnel to meet the needs of Canada's knowledge economy

Kate Brown

BC Lung Association Respiratory Rehabilitation Fellowship: Awarded to a postdoctoral fellow or doctoral student who engages in research related to respiratory rehabilitation. Fellowships are awarded based on academic and research excellence.

Emily (Yi-Wen) Chen
Carmen Sima

Rehabilitation Sciences Alumni Jane Hudson Scholarship: This scholarship has been endowed by alumni and friends in honour of W. Jane Hudson, founding member of the School of Rehabilitation Sciences. The award is offered to a graduate student in Physical Therapy.

Elizabeth Dao

Arthritis Society Vancouver Community Group James Kwan Scholarship: This scholarship is endowed by the Vancouver Community Group of The Arthritis Society, BC & Yukon Division for a student in the Department of Physical Therapy who is interested in clinical research in rheumatology or to a student completing an MSc or PhD in Rehabilitation Sciences who has a physical therapy focus to their research.

Alisson Ezzat

CIHR Banting and Best Canada Graduate Scholarship: To provide special recognition and support to students who are pursuing a Master's degree in a health related field at a Canadian institution. Recipients are considered to have an exceptionally high potential for future research achievement and productivity.

Bitia Iman
Alison Gerlach
Sue Peters

Marpole Women's Auxiliary: This scholarship is offered by the Marpole Women's Auxilliary of the George Pearson Centre and the GF Strong Rehabilitation Centre for a student in the MOT program, or a student completing an MSc or PhD in Rehabilitation Sciences who has an OT focus to their research.

Bitia Iman
Tamineh Mousavi

Louise McGregor Memorial Scholarship in Neurorehabilitation: This scholarship has been endowed in memory of Louise McGregor, former faculty member in the School of Rehabilitation Sciences, for MSc and PhD students conducting research in the area of neurorehabilitation within the Faculty of Medicine.

Bitia Iman

Rehabilitation Sciences PhD Scholarship: To provide funds of up to 4 years for outstanding PhD students

Katie Lee

MSc & PhD Students

- ICORD Travel Award:** This award is made available by the support of the Rick Hansen Institute and provides funds for ICORD trainees to travel to conferences, meetings, courses or workshops. **Brodie Sakakibara**
- Canadian Association on Gerontology's Annual Conference, Best Student Poster (Doctoral):** This award is sponsored by the CIHR Institute of Aging. **Brodie Sakakibara**
- Focus on Stroke Doctoral Research Award – Heart and Stroke Foundation:** This award provides salary support to individuals enrolled in a PhD program and undertaking full-time research training in the stroke field. **Lisa Simpson**
- Child & Family Research Institute Graduate Studentship:** This studentship is offered to a highly qualified masters or doctoral student undertaking research in any health related area that has direct relevance to children, adolescents or women. **Sandy Tatla**
- Rehabilitation Sciences Alumni Margaret Hood Scholarship:** Endowed by alumni, friends and the BCSOT in honour of Margaret R. Hood, founding member of the School of Rehabilitation Sciences. The scholarship is awarded to an MSc or PhD student with an OT focus. **Sandy Tatla**
- Four Year Fellowship:** FYFs provide four years of funding for top ranked commencing PhD students (domestic and international) **Kristine Theurer**
- Mitacs Accelerate Internship:** This internship connects graduate students and postdoctoral fellows with a BC company, under supervision of a faculty member. The graduate or postdoc intern applies their specialized expertise to business research challenges, transferring skills from theory to real-world application. Companies have the opportunity to access high-quality research expertise and connect with potential future employees and collaborators. **Katie Wadden**

MRSc Students

- Golden Quill Award:** This award is given by the Canadian Association of Occupational Therapists and acknowledges an individual author or a group of authors that has/have published an exceptional article in the Canadian Journal of Occupational Therapy. **Patricia Mortenson**
Ellie Wray

MOT Students

Harold James Russell Scholarship in Rehabilitation Sciences: Scholarships are endowed through a bequest from the late Harold James Russell and are made on the recommendation of the department **Aaryn Cleland**

Kievell Scholarship: These scholarships are made available to a first or second year female student, through the Vancouver Foundation by the late Myrtle Lorena Kievell in memory of her family. It is hoped that the award recipient will spend time in an area where medical help is very much needed – in Canada or elsewhere **Sarah Russell**

BCSOT Alison Lapage Memorial Scholarship: This gift was established in memory of Alison Lapage who taught OT at UBC. The gift is awarded to a 2nd year student who is a memory of the society, has demonstrated excellence in academic studies and fieldwork, and displays a strong interest in the study of mental health. **Laura Tighe**

Marpole Women's Auxiliary Scholarship in Rehabilitation Sciences: This scholarship is offered by the Marpole Women's Auxilliary of the George Pearson Centre and the GF Strong Rehabilitation Centre for a student in the MOT program, or a student completing an MSc or PhD in Rehabilitation Sciences who has an OT focus to their research. **Shelly Zonneveld**

Sarah Brabyn Memorial Award: This is a service award endowed in memory of the late Sarah Brabyn. The award is offered to a student who has good academic standing, especially in the area of biomechanical OT and has demonstrated leadership, community involvement, and a strong collegial spirit. **Marie Brown**

OTDBASE Distant Fieldwork Award in Occupational Therapy: This award is endowed by Marilyn Ernest-Conibear, UBC alumna and Professor Emeritus of UWO, to assist promising students in OT with travel and accommodation costs for fieldwork education in remote or distant communities. **Emily Hoag**

JR Rehabilitation Graduate Service Award in Occupational Therapy: Offered by JR Rehabilitation Services to students in the MOT program who demonstrate leadership and made a contribution to the OT field of practice through employment, volunteer work, and/or research. **Jill Wong**

Rehabilitation Sciences Award: This award has been endowed by the staff, students, and graduates of the School of Rehabilitation Sciences. The awards are given to two 2nd year students on the basis of good academic standing and overall personal qualities. **Holly Enns**
Cassie Crosby

MOT Students

- UBC Rehabilitation Sciences Alumni Bursary:** This bursary is given to an MOT student based on financial need, participation in school and community activities, and academic standing. **Jennifer Loffree**
- Ken F Fraser Memorial Scholarship:** Made to a 2nd year MOT student, these scholarships are endowed by friends and colleagues of the late Ken F. Fraser, the founding director of the GF Strong Rehabilitation Centre. They are based on academic standing. **Elizabeth MacDonald**
- Dr. Brock Fahrni Prize in Occupational Therapy:** This award is offered to a graduating student in the MOT program with the highest academic standing, accumulative for the entire program. **Elizabeth MacDonald**
- CIHR Health Professional Student Research Award:** This award is to strengthen clinical research and talent development by providing research training support to students in health professional degree programs leading to licensure in Canada. Awards are distributed to 2nd year students based on academic standing and potential to contribute to research relevant to occupational science and/or occupational therapy. **Elizabeth MacDonald**
- CAOT Book Prize:** This prize is offered to a student in the MOT program, maintaining the 2nd highest academic standing during the entire program **Krista Douglas**
- COTF Future Scholar Award (for 2011 Capstone Conference):** This award is intended for students who demonstrate potential in research. The department chooses the student who has potential for capital R research, but is currently engaged in small research, based on the RSOT 547 research project. **Laura Blackadar**

Degree Programs:

The Department of Occupational Science and Occupational Therapy educates the next generation of practitioners and thinkers through a diverse range of academic programs. OS&OT is home to four academic programs, the Master of Occupational Therapy (entry into practice program), the Research Graduate Program in Rehabilitation Sciences (MSc and PhD program), and two online programs: The Master of Rehabilitation Science and Graduate Certificate in Rehabilitation. The Rehabilitation Sciences programs are delivered in collaboration with the Department of Physical Therapy.



Master of Occupational Therapy (MOT) Program

The Master of Occupational Therapy (MOT) program is a two-year professional master's degree program, and the only occupational therapy program in BC. The MOT degree prepares graduates to be self-directed, lifelong learners, who consciously use theory, evidence and critical thinking skills to maintain, evaluate and improve their practice of occupational therapy. Graduates consistently

perform at or above the mean in the national certification examination for occupational therapists.

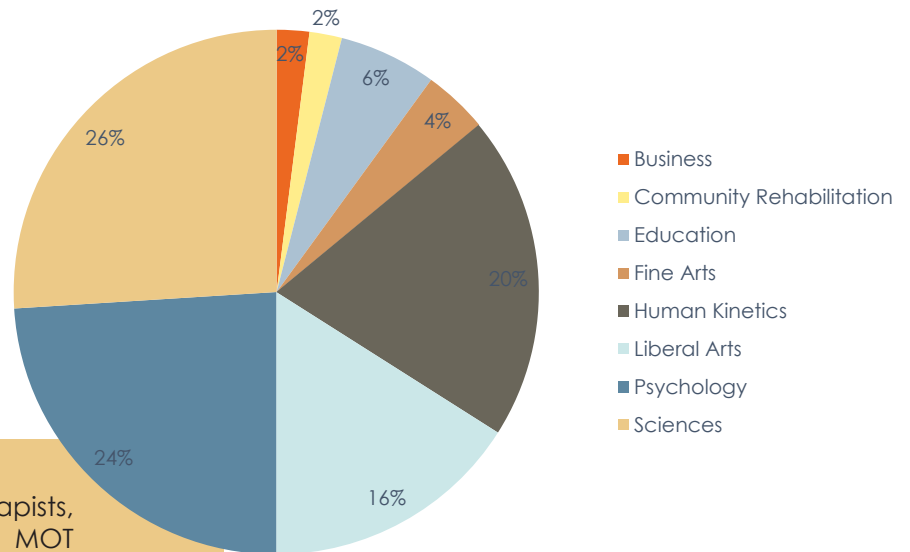
Annual enrollment is limited to 48 domestic seats and up to eight international seats. In 2012, 263 applications were received.

Fifty-one new students (40 women and 11 men) were welcomed into the MOT program in September. The majority of

students admitted received their undergraduate degrees from the University of British Columbia, but we also had students from Vancouver Island, Alberta, and Ontario.

Two international students joined us from Italy and the United States. As evidenced by the interdisciplinary nature of occupational therapy, the following is a breakdown of undergraduate degrees of the incoming class:

Undergraduate Degrees of MOT 1 Class



The BC Community of Occupational Therapists, and over 150 clinical faculty, enrich the MOT program. They ensure the content is grounded in contemporary practice.

MOT Presents:

Capstone Conference 2012

The MOT graduating class organized and hosted the seventh annual Capstone Conference on August 30, 2012 at the Vancouver Public Library. We were thrilled to welcome 278 attendees, which included a record 61 clinicians, in addition to faculty, staff, family members, friends, and occupational therapy students.

We were honoured to have two keynote addresses this year by two distinguished guests: Dr. Mary Law of McMaster University, and

clinician Stephen Epp. Dr. Law holds the John and Margaret Lillie Chair in Childhood Disability Research, and is co-founder of the CanChild Centre for Childhood Disability Research. Stephen Epp has been an occupational therapist for ten years, and is the Coordinator of the Strathcona Mental Health Team Rehabilitation Program in the Downtown Eastside of Vancouver. Both keynote speakers were dynamic and

engaging, inspiring conference attendees with their experience, knowledge and humour.

The conference theme was "Looking to the Future: Trends and Trendsetters in Occupational Therapy," a reflection of the innovative and timely research undertaken in the field. Student projects spanned the breadth of topics from chronic illness to mobility, while also focusing on occupation across the life span.

The Capstone Conference Planning Committee and the Occupational Therapy graduating class appreciated the generous funding provided by the Cedar Lodge Endowment Fund.

Student Research Projects presented at Capstone 2012:

Students	Title
Andrea Chamberlain & Shelly Zonneveld	Longitudinal Experiences of Power Mobility Use
Rebecca Sims & Ali Sum	Exploring Supported Employment with an In-patient Forensic Psychiatric Population: Does it work?
Krista Douglas & Jen Loffree	OT Mental Health Housing Services Student Research Project
Holly Enns & Brian O'Rourke	Identifying Gaps in Home Access Solutions for the Aging Population
Brian Condon & Jason Thorne	The Elevation Wheelchair: The Utilization of Dynamic Seating During Daily Wheelchair Use
Thea Borserio & Britt Guile	A Qualitative Exploration of Wheelchair dance experiences for manual wheelchair users
Kirsten Oldale & Karin Gavic	Wheelchair Dance for Manual Wheelchair Users
Justine Barnett & Jenn Brown	Development of the Fathers' Support Scale: NICU
Jerica Ditson & Sarah Russel	Mothers Managing Acute Pain in the Neonatal Intensive Care Nursery
Sonja Feddes & Liz MacDonald	Community Health and Well-Being Through Community Gardening
Nicola Mark & Tanya Neuert	Spirituality Dialogue Within Acute Hospital-Based Mental Health Units

Students

**Renee van Doorninck &
Jill Wong**

**Mina Thomas &
Jackie Shaddock**

**Brittney Hugelshofer &
Megan Hunter**

**Jessica Cheung &
Melissa Maron**

**Rachel Abel &
Shelby Fomenoff**

**Cassie Crosby &
Danielle Rae**

**Vanessa Hunter &
Laura Tighe**

**Melia Kinkade &
Nat Wong**

**Barbara Ann McFarlane &
Kristine Vaughan**

Lena Khoshbin

**Lindsay Richards &
Susan Schincariol**

**Jas Bains &
Michelle Lui**

Title

ROMANCE: Occupational Meanings of Older Adults' Online Dating Profiles

ROMANCE: Exploring Older Adults' Lived Experiences of Digital Dating

Participation of Children with Disabilities

Rehabilitation in Children with ABI

Motor Learning in the Child with Developmental Coordination Disorder

Whiilchair - Wheelchair Wii

Stroke Recovery Program in the Community

Stroke Recovery Program in the Community

Comprehensive Fatigue Assessment Battery for SCI

Comprehensive Fatigue Assessment Mattery for MS

Building an Understanding of MS Self-Management

MS Self-Management Outcome Measure

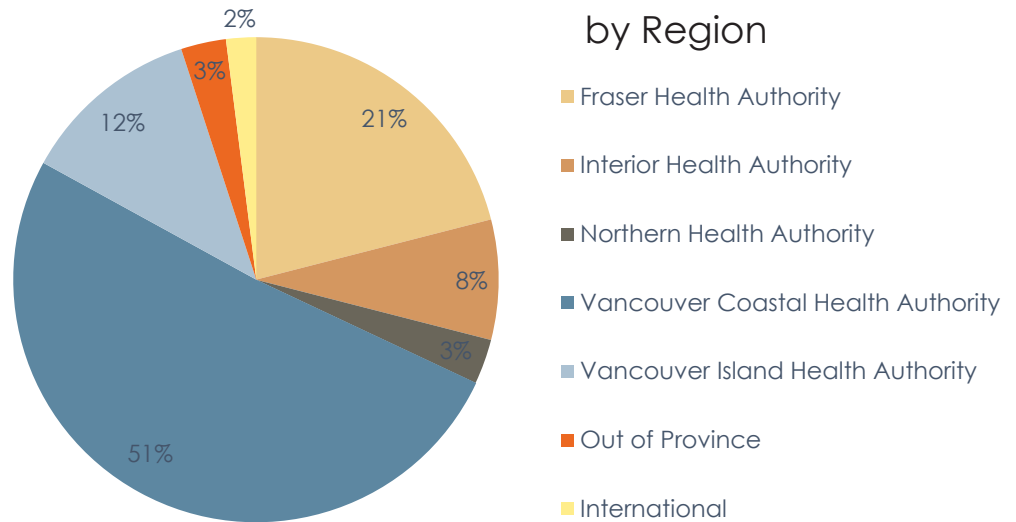


Fieldwork

Fieldwork placements play a pivotal role to integrate classroom learning with hands-on practice experience. Each student completes five placements with at least two placements outside of the Vancouver Coastal Health region.

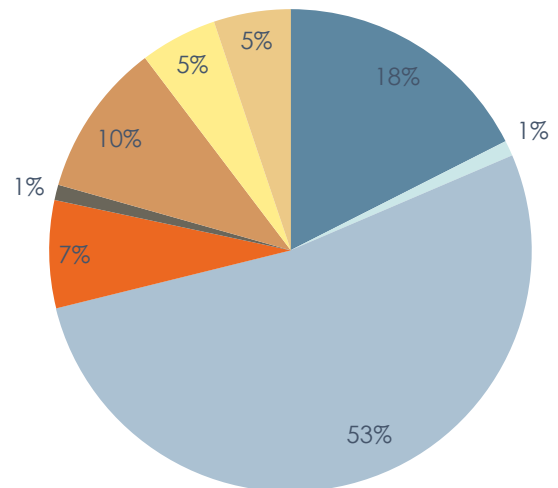
In 2012, seven MOT students completed national placements in Alberta, Ontario, Nunavut and the Yukon, and six students were placed internationally in Kenya, Sri Lanka and Uganda.

Placement Distribution



by Setting

- Community
- Forensic
- Hospital
- Inpatient
- Long-Term Care
- Outpatient
- Paediatric Facility
- Rehab Centre



Fieldwork Sites & Supervisors

In the following pages we acknowledge the sites and educators who hosted UBC MOT students in 2012. Although we try to acknowledge everyone, we apologize to any educators inadvertently missed.

Fieldwork Site	Fieldwork Educator / Preceptor
Access Community Therapists, Vancouver	Diane Gerrard
Alderwood Family Development Centre, Vancouver	Stephanie Ratzlaff
Back in Motion Rehab Inc., Richmond/Surrey	Jenny Simpson
BC Centre for Ability, Vancouver	Lenora Delaney Richelle Greabeiel Cory Howey Terry Meyer
BC Children's Hospital, Vancouver	Miranda Doherty Heather Durkin Susan Garret Mary Glasgow Brown Sue Kozak Katie Lee Bunting Margot MacKay Patricia Mortenson Daphne O'Young Astrid St. Pierre Meghan Steward Megahn Williams

Fieldwork Workshops & Other Key Resources

Free Clinical Educators Workshops are offered by the Department to provide Fieldwork Educators tools and resources to mentor students successfully. In 2012, we hosted four workshops at UBC, and offered sessions at Abbotsford Regional Hospital & Cancer Centre (Abbotsford), St. Joseph's General Hospital (Comox), and Vernon Jubilee Hospital (Vernon).

For those seeking additional fieldwork resources, the Departmental website features information for individuals who are interested in becoming preceptors, and for those who are currently educating students and want to hone their teaching skills.

To learn more, visit:

<http://osot.ubc.ca/fieldwork/clinicians/>

Fieldwork Site	Fieldwork Educator / Preceptor
Braemore Lodge, Penticton	Heather Boyes
Brock Fahrni Pavilion, Vancouver	Michelle Campbell
Burnaby Centre for Mental Health & Addiction	Mannie Chahal
Burnaby Hospital	Christina Cawker Evan MacKenzie Arneil Magleo Kimberly Quan Kaitlin Quirk Amy Robertson Holly Tang Stephanie Young
CBI OT Services	
Coquitlam	Kelley Scott
Nanaimo	Kerstin Daudrich Tricia Earl

Fieldwork Site	Fieldwork Educator / Preceptor
CBI OT Services (cont'd) Victoria	Nora Dun David Rosen Carol Talley Julia Toller Jennifer Wyburd
Champlain Community Care Access Centre, Renfrew	Jodi Cotnam Lynda Jamieson Thomas Lammi
Children's Therapy and Family Resource Centre, Kamloops	Jordana Pisis Toby Wendland
Community Psychiatric Services, North Vancouver	Gillian Walker
Cottonwoods Care Centre, Kelowna	Kirsty Kraft Lauren Mackenzie
Cumberland Lodge	Simon Robertson
Disability Service Programme, Kenya	Benard Otieno Nyajemo
Dr. Peter Centre, Vancouver	Vladislava Maksimcev
Eagle Ridge Hospital, Port Moody	Diana Burgess Laura Hanayli Laura Orlea Brian Waines
Eric Martin Pavilion, Victoria	Andrea Segsworth
GF Strong Rehabilitation Centre, Vancouver	Melissa Austin Aileen Cervantes Cynthia Fraser Dianna Mah-Jones Kelly Oliver Sarah Turyk Trish Van Kuyk
Glenrose Rehabilitation Hospital, Edmonton, AB	Krista Hammond

Fieldwork Site	Fieldwork Educator / Preceptor
Highland Health and Family Development Centre, Prince George	Heather Bromley Susan Culhoun
Holy Family Hospital, Vancouver	Heather Delane Jeanne Harborne Sandy Leznoff Jennifer Li
Island Hand Therapy, Victoria	Clare Faulkner
JR Rehab Services, Vancouver	Jill Olson Amanda Richmond
Kamloops Home and Community Care	Mo Hildebrand
Kelowna General Hospital	David Nelson Michelle Pidduck Beth Reid Laurie Richardson
Kelowna Mental Health Services	Patti Crozier
Kitimat Child Development Centre	Sheila Hamilton
Kootenay Boundary Regional Hospital, Trail	Teresa Cheng
Kootenay Health Services, Nelson	Christy Macfie Kate Naus
Langley Memorial Hospital	Chelsea Bromley
Lions Gate Hospital, North Vancouver	Casie Fischer Megan Perry Janet Pursell
Lyndsey Stevenato Children's Therapy Services, Barrie, ON	Lyndsey Stevenato

Fieldwork Site	Fieldwork Educator / Preceptor
Mary Pack Arthritis Program Vancouver	Domenica Knezy Carol Ng
Mbale Regional Referral Hospital, Mbale, Uganda	Mabala Fred
McBride Manor, Trail	Helen James
Mediated Learning Academy, Coquitlam	Jenny Sexton
Meridian Rehabilitation Consulting Inc., Vernon	Leanne Godwin
Mount St. Joseph Hospital, Vancouver	Clarissa Gavino Karen Gill Mary Lau
Mount St. Mary Hospital, Victoria	Danielle Michel Marjorie Sandercock
Nanaimo Regional General Hospital & Nanaimo Health Unit	Lisa Engel Heather Gillespie
Navajeevana Rehabilitation, Tangalla, Sri Lanka	Mira Robin
Nora Chambers Inc., Maple Ridge	Nora Chambers
Northern Interior Mental Health	Alana Oikenen
Orion Health – Vancouver Pain Clinic	Rebecca Lam Cara Rodrigues
Pacific Institution - Regional Treatment Centre, Abbotsford	Kelly Ash Kyra Williams
Peace Arch Hospital, White Rock	Michelle Grieve Stephanie Romanko Margaret Suh Melissa Wessel
Penticton Home and Community Care	Jill Chisholm
Penticton Regional Hospital	Shawn Wallich

Fieldwork Site	Fieldwork Educator / Preceptor
Prince George Child Development Centre	Jody Edamura Pat Hamilton
Provincial Assessment Centre, Burnaby	Cindy Ho Brianna Samson
Qikiqtani Rehabilitation Services, Nunavut	Lenora Moerland
Queen Alexandra Centre for Children's Health, Victoria	Christina Alexander Deb Dong Carlin Lindsay Christine Lynch Sharon Montgomery Krista Nakatsuka Carolyn Neil
Queen's Park Care Centre, New Westminster	Elaine Au
Richmond Continuing Health Services	Kevin Chow Yi-Chen Lily Liu Jane Pratt Birke Wessler
Richmond Hospital	Maryanne Noble Jeff Scott Stephanie Cheung Amanda Ho Ingrid Steller
Richmond Mental Health Team	Tracy Lermite
Richmond School Support Program	Courtney Kuzma Cindy Larden Frances Nakanishi
Royal Columbian Hospital	Zoe Martinig Bhal Randhawa Corey Stock Joy Wang
Royal Jubilee Hospital	Jan Wilson Jamie Lau Ruth O'Beirne Karin Louis Louise Patterson Neil Taylor

Fieldwork Site	Fieldwork Educator / Preceptor
RS Rehab Solutions Inc, Surrey	Wendy Tse
Senior's Health - North Island	Laurel Steed Nicol Tuck
South Hills Tertiary Psychiatric Rehabilitation Centre, Kamloops	Jen Bader Kristine Rasmussen
St. Paul's Hospital, Vancouver	Peter Haughton Clare Lakes Mark Metzger Christine Schiller Gagan Toor
Summerland Home and Community Care	Linda Lawry
Sunny Hill Health Centre for Children, Vancouver	Alexis Davis Sherylin Gasior Jennifer Law Sonja Magnuson Kathie Marina Wendy Meades Ivonne Montgomery Nicole Nybo Kara Straub Sandy Tatla
Surrey Memorial Hospital	Jennifer Burrows Sarabjeet Charchun Christine Erb Tina Jhingan Janine Lim Louise Lu Marietta Tang Allison Watters Nancy Willis
Surrey Mental Health & Substance Use Services	Alvina Burns
St. Vincent's Langara Residential Care, Vancouver	Karen Pott

Fieldwork Site	Fieldwork Educator / Preceptor
Terrace Child Development Centre	Jody Brown
UBC Hospital, Vancouver	Marie-Helene Bois Julia McLean Lisa McGillivray
University Hospital of Northern BC, Prince George	Louise Donnellan
Vancouver General Hospital	Narges Adab Lisa Alguire Emmeline Chang Stephanie Crabbe Taryn Doyle Judi Dueck Kirsty Federal Nigel Kam Jade Lew Jo Mulligan Gretchen Olund Andria Santos Kevin Waldorf Lisa Ward Carola Wiehr Cathy Wu Anastasia Wong Stephen Wong Jeanne Yiu
Vancouver Intensive Supervision Unit	Matt Derouin
Vancouver Community Health Services	
Health Services for Community Living	Gail Langton Susan McCalla
Pacific Spirit Community Health Centre	Pearl Chow Colleen Yuen
Raven Song Community Health Centre	Frieda Neudorf
Residential Practice Team	Ross McEachern

Fieldwork Site	Fieldwork Educator / Preceptor
Robert & Lily Lee Family Community Health Centre	Renae LaFreniere
Three Bridges Community Health Centre	Fiona Campbell Natalie Fitzgerald
Vancouver Rehab and Resources Team	Renee Lopes
Vancouver Community Mental Health Services	
Community Link Program	Erin Goodman Kary Otterstein
Early Psychosis Intervention Program	Ann Bangah Carolyn Desmarais
Gastown Vocational Services	Stephany Berinstein Maria King Julie Zimmerman
Grandview Woodland Mental Health Team	Marie Chafe Brigita Gražys
Mental Health Housing	Andrew Neale
Older Adult Rehabilitation Program (The Bright Spot)	Brian Nguyen
Strathcona Mental Health Team	Staci Kalmek Denise Kendrick Yun Leong
The Art Studios	Sean Murphy
West End Mental Health Team	Monica Budac Carrie Chase Sarah Sinanan Jenn Smolinski
Vernon Jubilee Hospital	Oluwaseun Akinlawon Aidan Negus Inver Lea Sugden

Fieldwork Site	Fieldwork Educator / Preceptor
Victoria Arthritis Centre	Jacklin Hoole
Victoria General Hospital	Cathy de Pont Esmée Rothschild Brenda Byrne Karen Baker Francesca Carter Shannon Ellis, Sandra Hunter, Jessica Lowrie

Research Graduate Programs in Rehabilitation Sciences

The Research Graduate Program in Rehabilitation Sciences offers MSc and PhD degrees. The goal of the MSc program is to prepare health professionals to engage in research. The primary goal of the PhD program is to prepare health professionals to conduct independent and collaborative research in rehabilitation sciences. The reputation and quality of mentorship in the program has grown, as evidenced by the increasing enrollment of students. The PhD program, in particular, has a threefold increase of students since 2006 (from 9 to 25). The number of students in the MSc program has remained steady over time, currently at 13.

Students conduct research of the highest calibre and in 2012, they presented 56 papers at conferences and published 27 peer-reviewed articles in well-respected,

national and international journals. Many students hold national scholarships and awards, for a combined total of over \$3 million.

In 2012, the program underwent a transition as Dr. Lyn Jongbloed, Associate Professor, stepped down as Chair of the graduate program. Lyn greatly enjoyed her time as Chair, and most appreciated the opportunity to get to know the students and work alongside faculty in both departments. She is also proud to have started the Brown Bag Lunch series, an informal research discussion among faculty and students on topics chosen by the students. The program welcomed Dr. Lara Boyd, Associate Professor (Department of PT) into the role, and looks forward to continuing the success of the research program under her leadership.

Congratulations

PhD and MSc students

Allison Ezzat, MSc

Cumulative Occupational Physical Load as a Risk Factor for Knee Osteoarthritis in Men and Women

The association between performing physical loading tasks at work and the presence of knee osteoarthritis was investigated in a population-based cohort. Occupational exposure was assessed using an innovative self-report measure. A large dose-response relationship was found between work exposure and having knee osteoarthritis providing new insights for future prevention research.

Shalini Lal, PhD

Resilience in youth recently diagnosed with psychosis: A qualitative inquiry

This study explored how youth, recently diagnosed with a psychiatric disorder, develop resilience (i.e., capacity to cope with adversity). The research showed that participants restored, maintained, and enhanced their resilience through the types of stories they told in relation to their illness and through their engagement in valued activities.

Stephanie Glegg, MSc

Therapists' use of virtual reality (VR) for brain injury rehabilitation

Tracking of clinical use habits, and pretest-posttest evaluation of determinants of therapists' VR adoption revealed differences between practice and research protocols, positive attitudes toward VR, and increased ease of use and self-efficacy following intervention. Primary barriers to VR use were time and client factors; facilitators were colleagues and organizational supports.

Mineko Wada, PhD

Life balance: Conceptions of dual-income parents with young children

Abstract: This phenomenographic study explored how dual-income parents with young children conceive balance in life and identified two ideologically competing conceptions: managing life and participating in a mix of occupations. Findings advance theories of life balance and offer recommendations to help parents manage the demands of multiple occupations and promote health.

Rehabilitation Sciences Online Programs

The Rehabilitation Science Online Programs consist of the Master of Rehabilitation Science (MRSc) and the Graduate Certificate in Rehabilitation (GCR). Both programs are designed for working health professionals and can be completed part-time. These programs are jointly supported by the Departments of Occupational Science and Occupational Therapy and Physical Therapy, with leadership from Sue Stanton, Program Director and Associate Professor (OSOT).

The RSOP engages a total of 33 educators: 15 supervisors of MRSc projects and those who serve in dual roles as instructors and supervisors. In 2012, 61 MRSc and 22 GCR students were enrolled in our programs. Occupational therapists studying in these programs interact with health professionals from 10 different disciplines and develop the skills and knowledge to change future practice.

In September 2012, a course-based option was introduced for new MRSc learners as an alternative to completing a research project. Students choosing the course-based option can complete the degree in 9 months, full-time, as opposed to one full year.

Highlights of 2012 include the recognition of Jodi Boucher, a Calgary-based physical therapist specializing in pelvic floor rehabilitation and a graduate student in the MRSc program. As one of her assignments, Jodi wrote an article titled "Bladder leaks are no laughing matter...a common but unspoken problem" which was subsequently published in the online Calgary's Child Magazine, April 2012 edition. That led to further recognition, as Calgary's Breakfast Television contacted her for an interview on Stress Incontinence in November. The program is incredibly proud of her acknowledgement and wishes to congratulate her on a job well done!

2012 was also the start of our Research Relays, a series of online seminars in which MRSc learners and graduates present results from systematic reviews or from their major research project. Launched in February 2012, the relays have proven very popular with nearly 300 participants signed up to participate in over six sessions. The following is a list of the relays presented:

- Parents' Experience in Role Negotiation in the Family Centered Care Model of Infant Services (Karen Hurtubise)
- Comparison of the Norwich Regime to the Static Splinting Protocol for Extensor Tendon Injuries (Clare Faulkner)
- Development of a Points-based Caseload Measure for Community Based Pediatric Therapists (Kathy Davidson)
- Successful Intraprofessional Relationships between Therapists and Therapist Assistants (Jennifer Stephenson)
- Processing Strategies Parents Use to Synthesize Healthcare Data Related to their Child (Karen Hurtubise)
- Pediatric Feeding: Results from Research Projects (Astrid St. Pierre & Janice Duiveststein)

Congratulations

MRSc graduates

Rebecca Shook, MRSc

Patients' and Caregivers' Perceived Stroke Education Needs in Inpatient Rehabilitation

This qualitative study explored the perceived education needs of three patients with stroke and three caregivers through thematic analysis of in-depth interviews. Results suggest that combining education needs and the manner in which they are addressed takes advantage of a “teachable moment” in an empowered environment and facilitates learning.

Sabrina Li, MRSc

Hong Kong elders' perspectives on “ageing-in-place” and community care services

Five independently living elders in Hong Kong shared their perspectives on “ageing-in-place” (AIP) and community care services through a focus group and questionnaire. Analysis indicated three main themes: differences between home and nursing home, challenges of AIP, and prerequisites for AIP. These findings provide insights for developing future services to support AIP.

Kim Mullens, MRSc

Service Providers' Knowledge and Attitudes towards the Recovery Paradigm in a Secure Forensic Mental Health Unit

Mental health professionals were surveyed regarding their knowledge and attitudes about the concept of recovery and its application in a forensic inpatient unit. Findings revealed educational needs and ideas for the further implementation of recovery principles into practice as well as areas for future research.

Sarah Strickey, MRSc

Physiotherapists' use of chronic disease self-management practices with patients in a hospital setting

This qualitative study used a questionnaire and focus group to explore physiotherapists' perspectives on the utilization of chronic disease self-management (CDSM) in acute care. Results indicate that education and support are needed for successful incorporation into acute care. Future research is recommended to develop specific strategies.

Mireille Delorme, MRSc

Fall Prevention for the Elderly: An Exploration of Roles

File review findings were compared to questionnaire results exploring opportunities for collaboration between home care occupational therapists and case managers in the delivery of fall prevention services. Additional education and a negotiated enhanced case management role during assessment and environmental hazard remediation may optimize health resources and provide earlier and effective fall prevention.

Tammam El-Khodori, MRSc

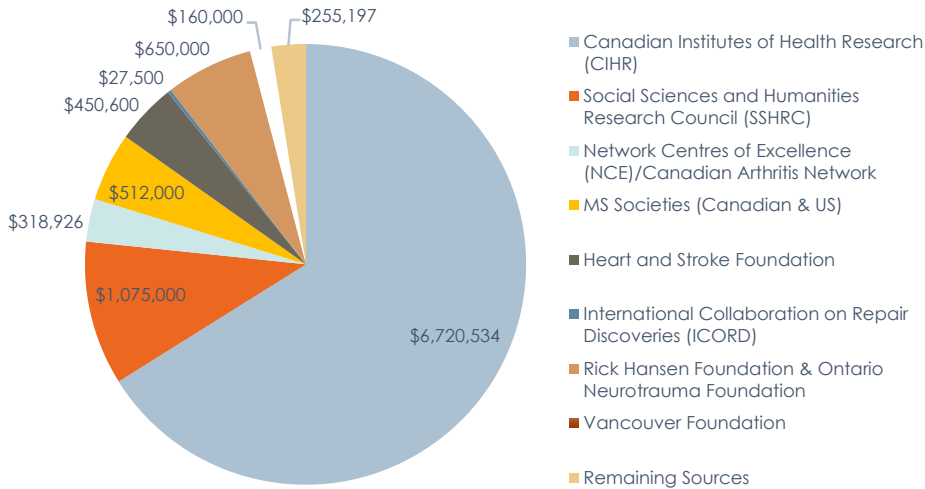
Nurses' Perception of Occupational Therapy in an Acute Care Hospital

This qualitative study used interviews to explore three charge nurses' perceptions of occupational therapy (OT). With charge nurses controlling referrals in one hospital, understanding their perceptions will inform the development of OT practices and improve referrals. Increased exposure to OT translated into a clearer understanding of the profession.

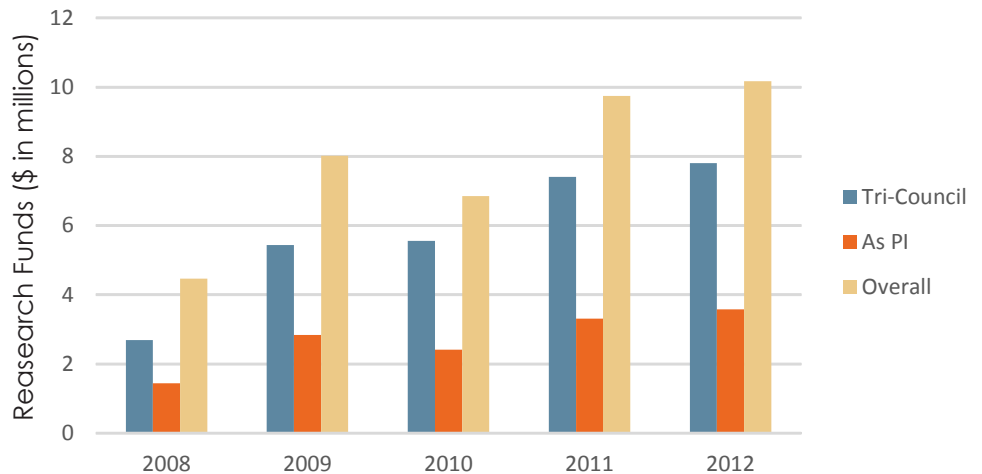
Scholarship, Research Innovation & Knowledge Exchange

Ten new research projects granted to faculty in 2012. The Department has over ten million dollars in continuing and new research funding, \$3.5 million as principal investigator, and almost \$7.8 million from the national Tri-Council granting agencies.

Current Research Funding by Granting Agency



Total Research Funds 2008 - 2012



Nintendo Wii Donates Game Consoles for OT Research

This year, Nintendo Canada generously donated 15 Wii systems and 15 Wii Balance Boards with Wii Fit Plus software to the Department of Occupational Science and Occupational Therapy so our faculty researchers could assess the potential effectiveness of the popular entertainment system for rehabilitation with different client populations, such as wheelchair users with spinal cord injury, stroke recovery patients, and other populations with physical impairments.

The use of gaming technologies is an emerging trend in rehabilitation because it helps to address a significant barrier - lack of motivation. Adjusting to physical disabilities and impairments, such as mobility in a wheelchair, can be extremely difficult, so exercises that are engaging, fun and social can go a long way to helping people strengthen muscles and improve dynamic balance for everyday movements.

A number of studies in the department are underway with the donated equipment. A pilot study led by Dr. Tal Jarus combined an adaptive floorboard with the Wii Balance Board to assess whether balance games and activities improved the functional sitting balance and quality of life of adult manual wheelchair users who have a spinal cord injury. Another study assesses the effectiveness of interventions using the Wii for stroke patients in the community. Dr. Bill Miller designed two Wii interventions - one for older adults with unilateral transtibial amputation, and the other for individuals with lower extremity amputation, both funded and ongoing with his graduate students.

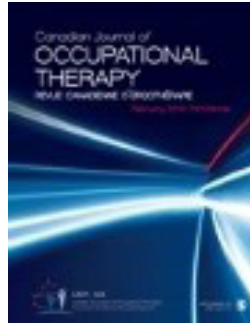
The Department gratefully acknowledges Nintendo of Canada for helping to advance rehabilitation strategies for Canadians.

The Power of Pen and Podium

In 2012, departmental faculty published a total of 42 peer-reviewed manuscripts in well-respected, national and international journals within the field (*Canadian Journal of Occupational Therapy*, *Journal of Occupational Science*) and in interdisciplinary publications (*Arthritis Care & Research*, *International Journal of MS Care*). Journal papers were rounded out with 85 conference presentations and 6 book chapters.

Faculty continue to engage in a variety of research collaborations that extend beyond the department. They maintain research partnerships with the following teams, centres, and networks: Arthritis Research Centre of Canada (ARC); Child and Family Research Institute (CFRI); Collaborative REsearch Team for the study of psychosocial issues in Bipolar Disorder (CREST.BD); International Collaboration on Repair Discoveries (ICORD); Center for Clinical Epidemiology and Evaluation; Vancouver Coastal Health Research Institute (VCHRI). We are joint founders of the Rehabilitation Research Lab in the GF Strong Rehabilitation Centre. Faculty have a number of collaborations that extend beyond our borders, including scholars from the United States, Australia, Israel, Japan and Hong Kong.

Faculty are invited to conduct peer reviews on a regular basis by the Canadian Institutes of Health Research and Vancouver Coastal Health Research Institute and other agencies. The reputation of the faculty's high calibre research is further evidenced by editorships of the following journals:



Catherine Backman

Editorial Board Member, Arthritis Care and Research
Associate Editor, Canadian Journal of Occupational Therapy/Revue Canadienne d'Érgothérapie

Susan Forwell

Guest Co-Editor, Journal of Occupational Science, Special Edition on Health Policy
Sub-Editor & Treasurer, Journal of Occupational Science
Associate Editor, International Journal of MS Care



Liisa Holsti

Editorial Board Member, Physical and Occupational Therapy in Pediatrics
Review Board Member, Canadian Journal of Occupational Therapy
Editorial Board-Critical Care, The Scientific World Journal
Editorial Board Member, Occupational Therapy International

Bill Miller

Editorial Board Member, Canadian Journal of Occupational Therapy
Editorial Board Member, The Open Spine Journal



Giving

The Department is appreciative of the tremendous support received from our alumni and donors. We have been fortunate to receive donations in time and energy to teaching, clinical supervision, committees, and mentorship for our students. We are grateful for the monetary donations made to the Department to advance strategic initiatives and support student awards.

Go to <https://www.supporting.ubc.ca/onlinedonation> to contribute to the

- Margaret Hood Scholarship
 - The Rehabilitation Sciences Alumni Bursary
 - The OSOT Research Initiatives Fund
- or make a general donation toward student learning

The Department was pleased to receive funds from LifeMark Health (a division of Centric Health) for a new student award in the amount of \$3,000. The *“LifeMark Award in Leadership, Clinical Excellence & Innovation in Occupational Therapy”* will recognize a senior student in the Master of Occupational Therapy program who demonstrates exceptional leadership talent, a commitment to clinical excellence and best practice, and innovation in health care delivery. Thank you to LifeMark for contributing to student excellence!

OTs Giving Back

This year, a group of MOT students volunteered two weeks of their summer vacation to help at a therapy camp designed for children aged 8-12 years diagnosed with Developmental Coordination Disorder (DCD). Karin Gavac, Vanessa Hunter, Melia Kinkade, Barbara Ann McFarlane, Michelle Lui and Renee Van Doornick,

helped run the camp and create a positive atmosphere that was integral to its success. "Without their assistance this pilot project would not have been possible," said Mike Hilliard, Physiotherapist with the Vancouver Regional Pediatric Team, and who provided guidance and supervision. "They brought a

great positive energy to the camp every day and were able to form strong working relationships with all children." Initial feedback from the children and parents was positive and encouraging.

Some students from the MOT Class of 2012 take a moment for a photo op during a chance encounter with Rick Hansen



Extending Our Reach

Community Engagement:

The Department of OS&OT strives to actively engage with those in the community and extend our reach beyond the classroom. This past year, the Department hosted a reception at the national occupational therapy conference in Quebec City. The event was well received with over 50 attendees who came to make connect with colleagues new and old. In October, the Department hosted an Alumni and Friends event in conjunction with the College of Occupational Therapists of BC Annual General Meeting. Attended by 100 people, it was a wonderful opportunity to celebrate OT month.

Global Engagement: OT in Uganda

WOW!

Theresa's story has been featured in the 2013 UBC Annual Report, which gets over 400 story submissions throughout the university, but only selects 80 noteworthy stories for inclusion.



Theresa McElroy graduated from the PhD program in Interdisciplinary Studies in 2012 (supervised by Catherine Backman, OSOT and Richard Mathias, School of Population and Public Health). In the course of collecting data for her research examining early childhood in war, she travelled to Northern Uganda, a region just emerging from 20 years of vicious conflict, to explore views of early childhood health and development. While there, she could see first-hand the struggle of people displaced by war, who had to rebuild their rural agrarian lives. The data she collected painted a picture of circumstances hindering caregivers' ability to employ traditional care practices to protect and nurture their youngest children. War left children exposed to numerous, cumulative risk factors that threatened long-term developmental potential.

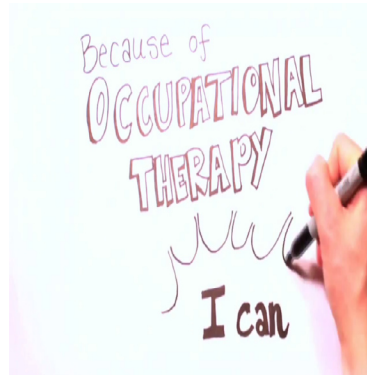
While in the field, Theresa advocated for early childhood programming which led her to work with international organizations, local government, community based organizations and community members to plan and establish two early childhood care and development centres run by farmers in the Pabo district. She left Uganda before the centres were fully functioning and throughout the year often wondered about their fate. This past Christmas 2012, she received an email update - one of the centres succeeded, while the other failed due to a rift between community members. The model of program delivery was re-worked and the leading organization went on to launch 7 more "community owned" early childhood development centres. The new centres are tied to local primary schools and therefore accessible to all. The news was the highlight of Theresa's doctoral journey - more than 8 months after graduation.

Generating a Surge:

MOT Students Produce Award-winning Video

When UBC Master of Occupational Therapy students, Rosie Higgins, Sylvie Rousseau and Chad Foster produced a video to raise awareness of the occupational therapy profession, their only goal was to win the national gOT Spirit Challenge hosted every year by the University of Alberta and the Canadian Association of Occupational Therapists. What happened instead went beyond anyone's expectations, as word quickly spread about the video on YouTube and garnered the students much attention, both nationally and internationally.

"The video was only up for a couple of hours before it hit



500 views. I was amazed," said Chad, the technical director of the video. At one point, viewership of the video was increasing by 1000 a day.

Since its posting in October 2012, the video has acquired over 100,000 views and continues to grow every day. Response has been

incredibly positive, with many comments thanking the students for explaining what OT is from a lay person's perspective, which is what the students were aiming for, says Sylvie, creative co-director. Today, Rosie, Sylvie and Chad are still fielding requests from countries as far away as Spain, the UK, Holland and Singapore, to subtitle the video and/or feature it on national websites for occupational therapy. All three students and their team members are proud of their achievement and contribution to increasing awareness of UBC, the Department of Occupational Science and Occupational Therapy, and its MOT program.

Powering Up:

New Grant Funding in 2012

Bolstering resilience in youth coping with stigma funded by the Canadian Institutes of Health Research (CIHR), 2012-2013. \$3,000. Principal Investigator: S Lal. Co-Investigators: M Suto, E Saewyc.

Therapeutic potential of sensory tongue stimulation combined with rehabilitation therapy for balance and gait function in people with incomplete SCI: A pilot study funded by ICORD Seed Grants, 2012-2013. \$20,000. Principal Investigator: T Lam. Co-Investigators: J Borisoff, S Forwell, JS Blouin.

Building synergy in promoting mental health awareness across campus using a student-led participatory approach funded by the UBC Teaching and Learning Enhancement Fund, 2012-2013. \$32,304. Principal Investigator: M Lee. Co-Investigators: P Hamber, S Lal, T Jarus, C Newton, M Groening, et al.

Knowledge to action wellness summit workshop funded by the UBC VPRI – International Research Collaboration Workshop program, 2012. \$10,000. Principal Investigators: E Michalak, M Suto.

Feasibility of a self-efficacy enhanced wheelchair training program for individuals with spinal cord injury: A pilot RCT funded by ICORD, 2012. \$7,500. Principal Investigator: WC Miller. Co-Investigators: JJ Eng; K Best; B Jacobson; G Huston.

Enhancing participation in the community by improving wheelchair skills (EPIC Wheels): A feasibility study funded by the Canadian Institutes of Health Research (CIHR), 2012-2014. \$138,000. Principal Investigator: WC Miller. Co-Investigators: JJ Eng, R Woodgate, I Mitchell, C Goldsmith, E Giesbrecht.

The McGill Immersive Wheelchair (miWe) Simulator for the clinical assessment and at-home training of powered wheelchair driving skills funded by CIHR, 2012-2015. \$377,400. Principal Investigator: P Archambault. Co-Investigators: P Boissy, D Gagnon, L Kirby, N Korner-Bitensky, WC Miller, D Reid, F Routhier.

Exploring e-health ethics and multi-morbidity funded by the Canadian Institutes of Health Research (CIHR), 2012-2014. \$70,695. Principal Investigator: C Backman. Co-Investigators: A Townsend, P Adam.

Music therapy as a pain modifying intervention in children with life-limiting neurological impairments and metabolic disorders funded by the Canadian Music Therapy Trust Fund, 2012. \$3,500. Principal Investigator: B Clark. Co-Investigators: L Holsti, H Siden.

IPC (Interprofessional Collaboration on the Run) funded by the UBC Teaching and Learning Enhancement Fund, 2012-2014. \$77,397. Principal Investigator: D Drynan.

Teaching healthcare professionals students about indigenous peoples' health issues using virtual patients funded by BC Campus, 2012-2014. \$68,123. Principal Investigator: P Gurdeep. Co-Investigators: B Paterson, B Budz, C Issak, S Dobson, S Leeuw, J Anthony, L Currie, M Lee and others.

Validation of the Rainbow Pain Scale funded by Amanda's Rainbow Foundation, 2012-2014. \$25,000. Principal Investigator: L Holsti. Co-Investigators: H Siden, Mahon, Giaschi.

Feasibility of a self-efficacy enhanced wheelchair training program for adults: A pilot RCT funded by BC Rehabilitation Foundation, 2012. \$15,000. Principal Investigator: WC Miller. Co-Investigators: JJ Eng; K Best; B Jacobson; G Huston.

WiiHAB-AMPS: A pilot randomized controlled trial to investigate the use of the Nintendo Wii for rehabilitation in older adults with a unilateral transtibial amputation funded by the Amputee Coalition of Canada, 2012. \$10,000. Principal Investigator: WC Miller. Co-Investigators: B Imam, H Finlayson, L McLaren.

Developing a web-based library of self-learning modules on research methods for students in professional masters programs funded by the UBC Teaching and Learning Enhancement Fund, 2012-2013. \$8,608. Principal Investigator: J Rozanova.

Work-based assessment of teamwork: An interprofessional approach funded by the Office for Learning and Teaching, Australian Government, 2012-2014. \$220,000 (AU). Principal Investigator: J Thistlethwaite. Co-Investigators: R Dunston, A Lee, M Moran, J Strong, D Forman, L Bainbridge, D Drynan, C Roberts, D Eley.

Validation of the OA GO AWAY tool, a self-evaluation/self-monitoring intervention for patients with knee or hip osteoarthritis to promote exercise adherence funded by the Canadian Arthritis Network, 2012-2013. \$19,400. Principal Investigator: P Tugwell. Co-Investigators: G Paterson, K Toupin-April, C Backman.

Ongoing Funding in 2012

An innovative interprofessional student-run clinic providing a community health program for people with chronic conditions funded by the UBC Teaching and Learning Enhancement Fund, 2011-2012. \$37,265. Principal Investigator: L Bainbridge. Co-Investigators: S Murphy, D Drynan, S Brolin, D Strogryn, T Timperly-Berg.

Interprofessional pain management course funded by the UBC Teaching and Learning Enhancement Fund, 2011-2012. \$50,000. Principal Investigator: L Bainbridge. Co-Investigators: M Clauson, W Hall, S Murphy, D Fielding, M Lee.

Music therapy as a pain modifying intervention in children with life-limiting neurological impairments and metabolic disorders funded by the American Music Therapy Association, 2011-2012. \$15,000. B Clark. Co-Investigators: L Holsti, H Siden.

An online bootcamp to improve efficiencies and effectiveness in text-based facilitation funded by the UBC Faculty of Medicine, 2011-2012. \$5,000. Principal Investigator: M Clark. Co-Investigator: S Stanton.

Effect of an inpatient supplementary practice program on lower extremity function funded by the Heart and Stroke Foundation of BC & Yukon, 2009-2012. \$450,000. Principal Investigator: J Eng. Co-Investigators: WC Miller, P Brasher, A Dawson.

MS Rehabilitation Fellowship funded by the National MS Society, 2010-2013. \$212,000 (USD). Principal Investigator: S Forwell. Co-Investigators: J Oger, H Tremlett, T Jiwa, B Grazys, V Szwajcer, N Bogod, R Reebye, P Rieckmann, L Body, WC Miller, V Devonshire, A Traboulee.

Enhancing participation in the community by improving wheelchair skills (EPIC Wheels) funded by the Canadian Occupational Therapy Foundation, 2011-2012. \$5,000. Principal Investigator: E Giesbrecht. Co-Investigator: WC Miller.

Striking a balance: Health & employment outcomes related to role overload and role balance in people with arthritis funded by the Canadian Institutes of Health Research (CIHR), 2010-2013. \$296,040. Principal Investigator: M Gignac. Co-Investigator: C Backman, Badley, Beaton, D Lacaille.

Tier II Canada Research Chair in neonatal health and development funded by the Canadian Institutes of Health Research (CIHR), Canada Research Chairs program, 2010-2015. \$500,000. Principal Investigator: L Holsti.

The sweetheart study funded by the Alva Foundation, 2011-2013. \$90,200. Principal Investigator: L Holsti. Co-Investigators: P Lavoie, JP Collet, E Kwan.

Understanding the in and out of university transition process for students with disabilities funded by the UBC VPRI – International Research Collaboration Workshop Grant, 2011-2012. \$10,000. Principal Investigator: T Jarus. Co-Investigator: M Lee, AH Eide.

A model for community stroke recovery programs funded by the Stroke Recovery Association of BC and the Heart and Stroke Foundation, 2011-2012. \$71,497. Principal Investigator: T Jarus. Co-Investigators: C Backman, M Suto, T Readman.

Promoting mental health awareness on campus: A student-led interprofessional learning project to benefit the UBC community funded by the UBC Teaching and Learning Enhancement Fund, 2011-2012, \$18,000. Principal Investigator: M Lee. Co-Investigators: T Jarus, L Eccott, C Newton, Groening M.

Development and pilot testing of a culturally sensitive and family-based self-management program for Aboriginal peoples with arthritis funded by Network Centres of Excellence (NCE): Canadian Arthritis Network, 2010-2012. \$299,526. Principal Investigator: D Lacaille. Co-Investigator: A Lehman, Multiple Collaborators, C Backman.

A randomized controlled trial evaluating the effectiveness of the Making It Work program at preventing work loss and improving at work productivity in employed people with inflammatory arthritis funded by the Canadian Institutes of Health Research, 2011-2016. \$585,043. Principal Investigator: D Lacaille. Co-Investigators: C Backman, J Esdaile, M Gignac, C Goldsmith, L Li, C Marra.

Development and pilot testing of a culturally relevant family-based self-management program for First Nations peoples funded by Vancouver Foundation, 2011-2012. \$160,000. Principal Investigator: A Lehman. Co-Investigators: D Lacaille, C Backman and others.

Disability policy alliance: Learning collaborative and equity coalition funded by the Social Sciences and Humanities Research Council of Canada (SSHRC), 2009-2014. \$1,000,000. PI: M McColl. Co-Investigator: L Jongbloed, A Aiken, A Kobayashi.

Using CBR research methods to explore and share wellness strategies for BC funded by Coast Capital Savings Depression Research Fund, 2011-2013. \$60,000. Principal Investigator: E Michalak. Co-Investigators: V Maxwell, G Murray, S Hinshaw, J Austin, M Suto, J Livingston, B Pesut, R Hole.

Quality of life, stigma and bipolar disorder: A collaboration for change funded by CIHR, 2010-2012. \$218,164. Principal Investigator: E Michalak, S Parikh. Co-Investigators: V Maxwells, G Murray, S Hinshaw, J Austin, M Suto, J Livingston, B Pesut, R Hole, M Lau, R Milev.

CIHR Team in Mobility for Older Adults (WheeMOAT) funded by the Canadian Institutes of Health Research, 2009-2015. \$1,500,000. Principal Investigator: WC Miller. Co-Investigators: L Demers, A Mackworth, RL Kirby, A Mihailidis, G Birch, L Clark, J Little, M Oishi, J Polgar, F Routhier, B Sawatzky, C Smith.

Evidence based rehabilitation: SCI reviews funded by the Rick Hansen Foundation & Ontario Neurotrauma Foundation, 2011-2016. \$650,000. Principal Investigator: WC Miller, JJ Eng, R Teasell. Co-Investigators: D Wolfe, A Townson, J Hsieh, 5 others.

Wheelchair self-efficacy enhanced training program to improve wheelchair use in older adults: The WheelSeeU feasibility study funded by the Canadian Institutes of Health Research, 2013-2015. \$240,000. Principal Investigator: WC Miller. Co-Investigators: JJ Eng, F Routhier, C Goldsmith, K Best.

Western Pacific Regional Research and Training Center for MS funded by the MS Society of Canada, 2009-2012. \$300,000. Principal Investigator: P Reickmann. Co-Investigators: S Forwell and collaborators.

Canadian Child Health Clinician Scientist Training Program funded by CIHR, 2009-2014. \$1,625,000. Principal Investigator: Rosenblum. Co-Investigator: L Holsti and others.

Digital dating: Online romance and sexuality in later life funded by the Social Sciences and Humanities Research Council of Canada (SSHRC), 2011-2014. \$25,000. Principal Investigators: J Rozanova, L Hurd-Clarke.

Sustainability of a multidimensional knowledge translation intervention to improve paediatric pain practices and outcomes funded by CIHR, 2011-2014. \$988,260. Principal Investigator: B Stevens. Co-Investigators: L Holsti and others.

A novel monitoring intervention to optimize mobility for older wheelchair users: The MOvIT Project funded by the Canadian Institutes of Health Research (CIHR), 2011-2012. \$100,000. Principal Investigator: RM Tamblyn. Co-Investigators: C Auger, WC Miller, J Jutai.

Publications

* Faculty member names are presented in bold. Student names are underlined.

Peer-reviewed Journal Articles = 47

Al-Bannay, H., **Jarus, T.**, **Jongbloed, L.**, Yazigi, M. & Dean, E. (In press). *Culture as a variable in health related research: New perspectives and caveats*. Accepted in Health Promotion International

Best KL, Desharnais G, Boily J, **Miller WC**, & Camp PG. (2012). *The effect of a trunk release maneuver on Peak Pressure Index, trunk entrapment and perceived discomfort in older adults seated in a high Fowler's position: a randomized controlled trial*. BMC Geriatrics, 12(1), 72.

Boronowski, L.E., Shorter, K., & **Miller, W.C.** (2012). *Measurement properties of the Occupational Therapy Discharge Needs Screening Tool*. Canadian Journal of Occupational Therapy, 79(4), 248-56.

Bodner, M.E., Rhodes, R., **Miller, W.C.**, & Dean, E. (In press). *Benchmarking curriculum content in entry-level health professional education with special reference to health promotion practice in physical therapy: A multi-institutional international study*. Accepted in Advances in Health Sciences Education, [Epub ahead of print].

- Bodner, M.E., Rhodes, R., Miller, W.C., & Dean E. (2012). *Smoking cessation and counselling: Practices of Canadian physical therapists*. American Journal of Preventive Medicine, 43:67-71.
- Celebrini, R.G., Eng, J.J., Miller, W.C., Ekegren, C.L., Johnston, J.D., & MacIntyre, D.L. (2012). *The effect of a novel movement strategy in decreasing ACL risk factors in female adolescent soccer players*. Journal of Strength and Conditioning Research, 26(12), 3406-3417.
- Eccott, L., Hall, W., Newton, C., Lee, M., Greig, A. & Wood, V. (In press). *Evaluating students' perceptions of interprofessional problem-based pilot learning project*. Accepted in the Journal of Allied Health.
- Furlan, J.C., Sakakibara, B.M., Miller, W.C., & Krassioukov, A. (In press). *A global perspective of the incidence and prevalence of traumatic spinal cord injury*. Accepted in Canadian Journal of Neurological Sciences.
- Giesbrecht, E., Mortenson, W.B., & Miller, W.C. (2012). *Prevalence and facility level correlates of need for wheelchair seating assessment among long-term care residents*. Gerontology, 58(4), 378-84.
- Gignac, M.A.M., Backman, C.L., Davis, A.M., Lacaille, D., Cao, X., & Badley, E.M. (In press). *Social role participation and the life course in healthy adults and individuals with osteoarthritis: Are we overlooking the impact on the middle-aged?* Accepted in Social Science & Medicine.
- Gignac, M.A.M., Backman, C.L., Kaptein, S., Lacaille, D., Beaton, D.E., Hofstetter, C., & Badley, E.M. (2012). *Tension at the borders: Perceptions of role overload, conflict, strain and facilitation in work, family and health roles among employed individuals with arthritis*. Rheumatology, 51, 324-332.
- Glegg, S., Holsti, L., Velikonja, D., Ansley, B., Brum, C., & Sartor D. (In press). *Factors influencing therapists' adoption of virtual reality for brain injury rehabilitation*. Accepted in Journal of Cybertherapy and Rehabilitation.
- Haj Ghanbari, B., Holsti, L., Road, J.D., & Reid, W.D. (2012). *Pain in people with chronic obstructive pulmonary disease (COPD)*. Respiratory Medicine, 106(7), 988-1005.
- Hatchard, K., Henderson, J., & Stanton, S.J. (2012). *Workers' perspectives on self-directing mainstream return to work following acute mental illness: Reflections on partnerships*. Work, 43(1), 43-52.
- Hochwald, O., Holsti, L., & Osiovič, H. (2012). *Early ACTH test identifies hypoadrenalism-related hypotension in preterm infants born 24-29 weeks gestational age*. Journal of Perinatology, 32, 412-417.
- Imam, B., & Miller, W.C. (2012). *Reliability and validity of a Chinese version of the Frenchay Activities Index*. Archives of Physical Medicine and Rehabilitation, 93(3), 520-6.
- Imam, B., Miller, W.C., & Anton, H. (2012). *Measurement properties of a telephone version of the Modified Fatigue Impact Scale among individuals with a traumatic spinal cord injury*. Spinal Cord, 50(12), 920-4.
- Kam, N., Struzik, J., Jarus, T., and Rand, D. (2012). *Is the Nintendo Wii suitable for stroke rehabilitation? A pilot feasibility and usability study*. The Israeli Journal of Occupational Therapy, 21, E3-E25.
- Kaptein, S.A., Backman, C.L., Badley, E.M., Lacaille, D., Beaton, D.E., Hofstetter, C., & Gignac, M.A.M. (in press). *Choosing where to put your energy: A qualitative analysis of the role of physical activity in the lives of working adults with arthritis*. Accepted in Arthritis Care & Research.
- Kendrick, D., Silverberg, N., Barlow, S., Miller, W.C. (2012). *Acquired brain injury self-management program: A pilot study*. Brain Injury, 26(10), 1243-9.
- Kyi, M.T., Fischer, J.A., Penner, J., Read, J., Backman, C.L. (2012). *Physical effect of work on healthy individuals: Implications for FCE testing*. Work, 42, 233-239.

- Lal, S., Jarus, T., & Suto, M. J. (2012). *A scoping review of the Photovoice method: Implications for occupational therapy research*. Canadian Journal of Occupational Therapy, 79, 1-5.
- Lal, S., Suto, M., & Ungar, M. (2012). *Examining the potential of combining the methods of grounded theory and narrative inquiry: A comparative analysis*. The Qualitative Report, 17(41), 1-22.
- McDonald, H., Dietrich, T., Townsend, A., Cox, S., Li, L.C. & Backman, C.L. (2012). *Exploring occupational disruption among women after onset of rheumatoid arthritis*. Arthritis Care & Research, 64, 197-205.
- McElroy, T., Muyinda, H., Atim, S., Spittal, P. & Backman, C. (2012). *War, displacement and productive occupations in northern Uganda*. Journal of Occupational Science, 19, 198-212.
- McLean, A., Jarus, T., Hubley, A. M. Jongbloed, L. (2012). *Differences in social participation between individuals who do and do not attend brain injury drop-in centres: A preliminary study*. Brain Injury, 26, 83-94.
- Miller, E., Tyler, D., Rozanova, J., & Mor, V. (2012). *National newspaper portrayal of U.S. nursing homes: Periodic treatment of topic and tone*. Milbank Quarterly, 90(4): 725-761
- Mortenson, W.B., Miller, W.C., Backman, C.L., & Oliffe, J.L. (2012). *The association among mobility, participation and wheelchair-related factors in long-term care residents who use wheelchairs as their primary means of mobility*. Journal of the American Geriatric Society, 60, 1310-1315.
- Mortenson, W.B., Oliffe, J.L., Miller, W.C., Backman, C.L. (2012). *Grey spaces: The wheeled fields of residential care*. Sociology of Health & Illness, 34, 315-329.
- Neil, A., Ens, E., Pelletier, B., Jarus, T., & Rand, D. (In press). *Eliciting upper extremity movement by playing video games - Nintendo Wii vs. Sony PlayStation EyeToy: implications for stroke rehabilitation*. Accepted in the European Journal of Physical and Rehabilitation Medicine.
- Rosenberg, L., Bart, O., Ratzon, N., & Jarus, T. (In press). *Personal and environmental factors predict participation of children with and without mild developmental disabilities*. Accepted in Journal of Child and Family Studies. [Epub ahead of print]
- Rosenberg, L., Jarus, T., Bart, O., & Ratzon, N. (2012). *Perceived environmental restrictions for the participation of children with mild developmental disabilities*. Child: Care, Health & Development, 38, 836-843.
- Rozanova, J., Keating, N., & Eales, J. (2012) *Unequal social engagement of older Canadians: Constraints on choice*. Canadian Journal on Aging / La Revue canadienne du vieillissement, 31 (1), 25-36.
- Rushton, P.W., Kirby, R.L., & Miller WC. (2012). *Manual wheelchair skills: Objective testing versus subjective questionnaire*. Accepted in Archives of Physical Medicine and Rehabilitation. [Epub ahead of print].
- Rushton, P.W., Miller, W.C., Kirby, R.L., & Eng, J.J. *Measure for the assessment of confidence with manual wheelchair use (WheelCon 2.1): Reliability and validity*. J Rehabil Med, 45, 61-67.
- Sakakibara, B.M., Hirtzig, S.L., Miller, W.C., Eng, J.J. & the SCIRE Research Team. (2012). *An evidence-based review on the influence of aging with a spinal cord injury on subjective quality of life*. Spinal Cord, 50(8), 570-8.
- Sakakibara, B.M., Miller, W.C., Eng, J.J., Backman, C.L., & Routhier, F. (2012). *Preliminary examination of the relationship between participation and confidence in older manual wheelchair users*. Archives of Physical Medicine and Rehabilitation [Epub ahead of print].
- Smith, S. & Suto, M.J. (2012). *Religious and/or spiritual practices: Extending spiritual freedom to people with schizophrenia*. Canadian Journal of Occupational Therapy, 79, 77-85.
- St.Pierre, A., Reelie, B., Dolan, A., Stokes, R., Duvestein, J. & Holsti L. (2012). *A Delphi survey: Terms used to describe videofluoroscopic feeding studies*.

Canadian Journal of Occupational Therapy, 79(3):159-66.

Sutliff, M.H., Miller, D. & **Forwell, S.** (2012). *Developing a functional capacity evaluation specific to multiple sclerosis*. International Journal of MS Care, 14(Suppl 3), 1-28.

Suto, M.J. (2012). *Leisure participation and well-being of immigrant women in Canada*. Journal of Occupational Science, October 16, 2012, [Epub ahead of print].

Suto, M., Livingston, J., Hole, R., Lapsley, S., Hinshaw, S.P., Hale, S., & Michalak, E.E. (2012). *"Stigma shrinks my bubble:" A qualitative study of understandings and experiences of stigma in people with bipolar disorder*. Stigma Research and Action, 2(2), 85-92.

Tatla, S., Rodonski, A., Cheung, J., Maron, M., & **Jarus, T.** (In press). *Wii-habilitation as balance therapy for children with acquired brain injury*. Accepted in Developmental Neurorehabilitation.

Townsend, A., **Backman, C.L.**, Adam, P., Li, L.C. (In press). *A qualitative interview study: Patient accounts of medication use in early rheumatoid arthritis from symptom onset to early post diagnosis*. Accepted in BMJ.

Vaughan, K. & **Miller, W.C.** (2012). *Validity and reliability of the Chinese translation of the Physical Activity Scale for the Elderly (PASE)*. Disability and Rehabilitation, June 7, 2012 [Epub ahead of print].

Watters, A.M., Pearce, C., **Backman, C.L.**, & **Suto, M.J.** (2012). *Occupational engagement and meaning: The experience of ikebana*. Journal of Occupational Science, August 3, 2012 [Epub ahead of print].

Yiu, J., **Miller, W.C.**, Eng, J.J., & Liu Y. (2012). *Longitudinal analysis of balance confidence in individuals with stroke using a multilevel model for change*. Neurorehabilitation and NeuroRepair, 8, 999 - 1006.

Peer-reviewed Conference Presentations = 96

Abel, R., Fomenoff, S., **Jarus, T.**, & **Zwicker, J.** (June 2012). *Developmental coordination disorder: Does focus of attention affect motor learning?* Canadian Association of Occupational Therapists conference. Quebec City, PQ.

Al-Bannay, H., **Jarus, T.**, **Jongbloed, L.**, Li, Z., & Dean, E. (2012). *Tailoring the Harvard Diabetes Special Health Report on diabetes education to the cultural needs of Saudi women*. 2nd Global Conference: Making Sense of Chronicity, London, UK.

Al-Bannay, H., **Jarus, T.**, **Jongbloed, L.**, Li, Z., & Dean, E. 1st American Diabetes Middle East Congress

Auger, C., Jutai, J.W., **Miller, W.C.** & the CanWheel Research Team. (October 2012). *Measurement properties of the ATOP/M for middle-aged and older adults who use power wheelchairs*. Invited symposium presentation at the Canadian Association on Gerontology, Vancouver, BC.

Auger, C., Tamblyn, R., **Miller, W.C.**, & Jutai JW. (October 2012). *Feasibility of Monitoring Mobility Outcomes for Wheelchair Users Aged Above 50 Years with Computerized Calls*. Poster presented at the Canadian Association on Gerontology, Vancouver, BC.

Avrech Bar, M., & **Jarus, T.** (May 2012). Canadian Society of Occupational Scientists Symposium. Edmonton, AB.

Backman, C.L. (2012, October). *Examining the relationship between occupational balance and health in mothers*. Paper presented at the Society for the Study of Occupation: USA Annual Research Conference, Portland, OR.

Backman, C.L. (2012, June). *Margaret R. Hood: Founder of occupational therapy education in British Columbia*. Paper presented at the Canadian Association of Occupational Therapists Annual Conference, Quebec City, QC.

- Backman, C.L.** & **Longson, A.** (2012, November). *To love and to hold: Men describe parenting in the presence of inflammatory arthritis*. Paper presented at the Association of Rheumatology Health Professionals Annual Scientific Meeting, Washington, DC. Arthritis & Rheumatism (abstract supplement), S379.
- Backman, C.L.**, Townsend, A., & Li, L.C. (2012, October). *Changing shoes: Metaphorical descriptions of rheumatoid arthritis and identity*. Society for the Study of Occupation: USA Annual Research Conference, Portland, OR.
- Bains, J.**, **Lui, M.**, **Parvaneh, S.**, **McKall, K.**, **Ghahari, S.** & **Forwell, S.J.** (June 2012). *Comprehensive fatigue assessment battery for traumatic brain injury: Clinicometric properties*. Poster presentation to the 80th Canadian Association of Occupational Therapists (CAOT) Annual Conference, Quebec City. P. 37.
- Best, K.**, & **Miller, W.C.** (May-June 2012). *Enabling wheeled mobility: the development of a self-efficacy enhanced wheelchair training program for older manual wheelchair users*. Poster presented at the International Federation on Ageing 11th Global Conference on Ageing, Prague, Czech Republic.
- Best, K.**, & **Miller, W.** (October 2012). *Self-efficacy enhanced wheelchair training for older manual wheelchair users. A pilot feasibility trial*. Poster presented at the Canadian Association on Gerontology, Vancouver, BC.
- Best, K.**, **Miller, W.C.**, & **Eng, J.J.** (October 2012). *Balance confidence following stroke rehabilitation predicts self-reported physical function and mobility 12 months later*. Poster presented at the American Congress of Rehabilitation Medicine Annual Conference, Vancouver, BC.
- Bodner, M.**, **Dean, E.**, **Rhodes, R.**, & **Miller, W.C.** (June 2012). *Smoking cessation and counselling: practices of Canadian physical therapists*. Poster presented at the American Physical Therapy Association Annual Conference & Exposition, Tampa, Florida.
- Butler, K.**, **Butcher, R.**, & **Suto, M.** (June 2012). *Group gardening and quality of life for individuals with complex physical disabilities*. Canadian Association of Occupational Therapists conference. Quebec City, PQ. (Conference Program)
- Casey, R.**, **Jongbloed, L.**, **Suto, M.**, & **Davis, S.** (June 2012). *Meaning in activities for people who live with schizophrenia*. Canadian Association of Occupational Therapists conference. Quebec City, PQ. (Conference Program)
- Chamberlain, A.**, **Zonneveld, S.**, **Mortenson, W.B.**, & **Miller, W.C.** (June 2012). *Older adults' experiences of power mobility: A longitudinal mixed-methods study*. Poster presented at the Canadian Association of Occupational Therapists National Conference. Quebec City, PQ.
- Crider, C.**, **Calder, R.**, **Lee, K** & **Forwell, S.J.** (May 2012). *Occupational transition: Critical analysis of transition theory*. Canadian Society of Occupational Science (CSOS) Biannual conference, Edmonton, Alberta, Canada. p. 8. <http://www.csoscanada.com/documents/2012ConferenceAbstracts.pdf>
- Crosby, C.**, **Rae, D.**, **Harburn, J.**, & **Jarus, T.** (November 2012). *Wheelchair floorboard for Wii: An innovative balance rehabilitation tool*. The 63rd Annual Conference of the Israeli Association of Physical Rehabilitation Medicine, Tel Aviv, Israel.
- Crosby, C.**, **Rae, D.**, **Harburn, J.**, & **Jarus, T.** (June 2012). *Wheelchair FloorBoard for Wii: An innovative balance rehabilitation tool*. Canadian Association of Occupational Therapists conference. Quebec City, PQ. June 2012.
- Demers, L.**, **Rushton, P.W.**, **Mortenson, B.**, **Chan, E.**, & **Miller, W.C.** & the CanWheel Team. (October 2012). *Introducing a tool for measuring the impact of power mobility use by older adults on their family caregivers*. Invited symposium presentation at the Canadian Association on Gerontology, Vancouver, BC.

Desharnais, G., Boily, J., Camp, P., Best, K., & **Miller, W.C.** (March 2012). *The effect of the trunk release on interface pressures of individuals seated in a High Fowler's Position: Lessening the big squeeze.* Paper presented at the 28th International Seating Symposium, Vancouver, BC.

Forwell, S.J. (May 2012). *Comprehensive fatigue assessment: Constructing a model for chronic diseases.* Council of Occupational Therapists from the European Countries (COTEC), Stockholm, Sweden. <http://cotec2012.se/?id=41>

Forwell, S. J. (June 2012). *Biomedical, economic & socio-political frameworks that influence practice: A Canadian perspective.* MS Health Policy Symposia, Consortium of MS Centers, San Diego, CA.

Forwell, SJ & Ghahari, S. (May 2012). *Comprehensive fatigue assessment battery for multiple sclerosis: Clinico-metric properties.* Council of Occupational Therapists from the European Countries (COTEC), Stockholm, Sweden. <http://cotec2012.se/?id=41>

Forwell, S.J., Ghahari, S. & **Suto, M.** (May 2012). *Why are some adults with multiple sclerosis more successful self-managers?: A qualitative study.* Council of Occupational Therapists from the European Countries (COTEC), Stockholm, Sweden. poster. <http://cotec2012.se/?id=41>

Field, D., & **Miller, W.C.** (March 2012). *Development of the Wheelchair Outcome Measure for adolescents.* Paper presented at the 28th International Seating Symposium, Vancouver, BC, Canada.

Ghahari, S. & **Forwell, S.** (June 2012). *CCSVI: The messages in social media.* Poster presentation to the Annual Meeting of Consortium of Multiple Sclerosis Centres (CMSC). San Diego, US.

Ghahari, S., **Forwell, SJ** & **Suto, M.** (June 2012). *A model of multiple sclerosis self-management: A qualitative study.* 80th Canadian Association of Occupational Therapists (CAOT) Annual Conference. Quebec City, Canada. p. 36.

Ghahari, S., **Forwell, S.J.**, & **Suto, M.** (May 2012). *Why are some adults with multiple sclerosis more successful self-managers? A qualitative study.* Council of Occupational Therapists from the European Countries (COTEC) Congress. Stockholm, Sweden.

Giesbrecht, E., **Miller, W.C.**, & Mitchell, I. (November 2012). *Collaborating with older adults: An innovative wheelchair skills home program.* Poster presented at the Gerontological Society of America's 65th Annual Scientific Meeting, San Diego, CA.

Giesbrecht, E., **Miller, W.C.**, & Woodgate, R. (October 2012). *Even the best laid plans: Experiences of older adult wheelchair users and their caregivers.* Poster presented at the Canadian Association on Gerontology, Vancouver, BC.

Hunter, V., Tighe, L., **Suto, M.**, McLean, A., Ferguson, A., & **Jarus, T.** (June 2012). *Community stroke recovery programs and participation: A qualitative study.* Canadian Association of Occupational Therapists conference. Quebec City, PQ.

Jarus, T., Gonzalez Rangel, E.I., Morton, J., Lal, S., & Mortenson, P. (June 2012). *Perspectives of youth with Duchenne on participation in meaningful activities.* Canadian Association of Occupational Therapists conference, Quebec City, PQ.

Jarus, T., Horghagen, S., **Lee, M.**, Magnus, M., Nolan, C., Sachs, D., & Schreuer, N. (November 2012). *Diversity in higher education – inclusion for students with diverse disabilities.* First International Congress Of University And Disability, Madrid, Spain.

Jarus, T., Sachs, D., Nolan, C., **Lee, M.**, Schreuer, N., & Magnus, E. (November 2012). *Diversity in higher education – inclusion for students with disabilities in health and human service professions.* International Congress of University and Disability, Madrid, Spain.

Jarus, T., **Suto, M.**, Kinkade, M., Wong, N., & McLean, A. (May 2012). *Comparison of two constructs – Community integration and participation.* Canadian Society of Occupational Scientists Symposium, Edmonton, AB.

- Jarus, T., Suto, M.,** Readman, T., Hubley, A., & Fink-Jensen, K. (October 2012). *Community stroke recovery programs – Effects on community reintegration, participation and quality of life*. The American Congress of Rehabilitation Medicine, Vancouver, Canada.
- Jarus, T., Suto, M.,** Readman, T., Hubley, A., & Fink-Jensen, K. (November 2012). *Community reintegration, participation and quality of life of community-dwelling stroke survivors*. The 63rd Annual Conference of the Israeli Association of Physical Rehabilitation Medicine, Tel Aviv, Israel.
- Khoshbin, L., Ghahari, S. & Forwell, S.** (June 2012). *The multiple sclerosis self-management scale: Psychometric testing*. Poster presentation to the Annual Meeting of Consortium of Multiple Sclerosis Centres (CMSC). San Diego, US.
- Kinkade, M., McLean, A., Suto, M., & Jarus, T.** (November 2012). *Comparison of two measurement tools for community integration and participation*. The 63rd Annual Conference of the Israeli Association of Physical Rehabilitation Medicine, Tel Aviv, Israel.
- Kinkade, M., Wong, N., Jarus, T., McLean, A., Suto, M., & Ferguson, A.** (June 2012). *Comparison of two measurement tools for community integration and participation*. Canadian Association of Occupational Therapists conference. Quebec City, PQ. (Conference Program)
- Kirby, R.L., Miller, W.C.,** Routhier, R., Demers, L., Mihailidis, A., Miller-Polgar, J., Smith, C., McAllister, M., Theriault, C., Thompson, K., & Rushton P. (October 2012). *Effectiveness of a wheelchair skills training program for power mobility users: A randomized controlled trial*. Invited symposium presentation at the Canadian Association on Gerontology, Vancouver, BC.
- Lal, S., & Suto, M.** (February 2012). *Resilience in early psychosis: The role of daily activities and the environment*. Presented at the 2012 International Occupational Therapy Conference, Hong Kong.
- Lal, S., & Suto, M.** (May 2012). *Resilience in early psychosis: The role of 'therapeutic occupations.'* Canadian Society of Occupational Scientists Symposium. Edmonton, AB. (Conference Supplement)
- Lal, S., & Suto, M.** (June 2012). *Resilience in early psychosis: The role of 'highly valued' activities*. Canadian Association of Occupational Therapists conference. Quebec City, PQ. (Conference Program)
- Lee, M., Jarus, T.,** Nolan, C., Sachs, D., Schreuer, N., & Magnus, E. (September 2012). *Diversity in higher education - Inclusion for students with mental illness*. Psychosocial Rehabilitation National Conference: Empowering Changes through Psychosocial Rehabilitation, Vancouver, BC.
- Li, L.C., Adam, P.M., Backman, C.L.,** Brooks, S., Ellert, G.A., Jones, A., Kamensek, O., Koehn, C., Lacaille, D., Maloney, C., Townsend, A.F., Yacyshyn, E., Yousefi, C. & Stacey, D. (November 2012). *Proof-of-concept study of an animated, web-based methotrexate decision aid for patients with rheumatoid arthritis*. Poster presentation, Association of Rheumatology Health Professionals Annual Scientific Meeting, Washington, DC. Arthritis & Rheumatism (abstract supplement), S1013.
- Li, L.C., Townsend, A.F., Adam, P.M., Backman, C.L.,** Brooks, S., Ellert, G.A., Jones, A., Kamensek, O., Koehn, C., Lacaille, D., Leese, J., Maloney, C., Yacyshyn, E., Yousefi, C. & Stacey, D. (November 2012). *Exploring how patients with rheumatoid arthritis use a methotrexate decision aid for making treatment choices*. Paper presented at the Association of Rheumatology Health Professionals Annual Scientific Meeting, Washington, DC. Arthritis & Rheumatism (abstract supplement), S738.
- MacDonald, E.J., Feddes, S. & Suto, M.** (June 2012). *The impact of community gardening on perceived health and well-being*. Canadian Association of Occupational Therapists conference. Quebec City, PQ. (Conference Program)

- Maron, M., Cheung, J., Tatla, S., & Jarus, T. (June 2012). *Wii or Kinect? Balance rehabilitation in children with brain injury*. Canadian Association of Occupational Therapists conference, Quebec City, PQ.
- McFarlane, B.A., Vaughan, K., Ghahari, S., Fogelberg D. & Forwell, S.J. (June 2012). *Comprehensive fatigue assessment battery for spinal cord injury: Clinicometric properties*. Poster presentation for the Canadian Association of Occupational Therapists (CAOT) Annual Conference, Quebec City, Canada. p. 40.
- Mehta, S, Wolfe D, Eng J, Miller B, Townson A, Hsieh J, Connolly S, Sakakibara B, Boily K, Teasell R, & the SCIRE Research Group. (May 2012). *SCIRE 3.0: A platform for enhancing practice through evidence-based initiatives*. Rick Hansen Foundation Interdependence 2012 Conference, Vancouver, BC.
- Miller, W.C.,** Sakakibara BM, & Rushton, P.W. (November 2012). *The prevalence of low confidence with using a wheelchair and examination of the relationship between wheelchair skill and confidence*. Poster presented at the Gerontological Society of America's 65th Annual Scientific Meeting, San Diego, CA.
- Mortenson, W.B., Demers L, & Miller W. (October 2012). *Power mobility: Experience of users over time*. Invited symposium presentation at the Canadian Association on Gerontology, Vancouver, BC.
- Mortenson, W.B., Rushton, P., Demers, L., & Miller, W.C. (June 2012). *"There's lots of compromises": Experiences of Canadian power mobility users over time*. Paper presented at the Canadian Association of Occupational Therapists National Conference, Quebec City, PQ.
- Mousavi, T., Forwell, S.J. Dean, E. & Dharamsi, S. (May 2012). *Conceptualizing occupation using the Capabilities Approach*. Canadian Society of Occupational Science (CSOS) Biannual conference, Edmonton, Alberta, Canada. p. 24. <http://www.csoscanada.com/documents/2012ConferenceAbstracts.pdf>
- Neuert, T., Mark, N., **Suto, M., & Smith, S.** (June 2012). *Spirituality conversations within an acute mental health unit*. Canadian Association of Occupational Therapists conference, Quebec City, PQ. (Conference Program)
- Nikolova, V., Souza, M., Sakakibara, B., & Miller, W.C. (June 2012). *Manual wheelchair skills training to improve confidence in older adults*. Accepted as a poster presentation at the Canadian Association of Occupational Therapists National Conference, Quebec, PQ.
- Parvenah, S., Mortenson, W.B., & Miller, W.C. (June 2012). *Validating the wheelchair outcome measure for residents in long-term care*. Accepted as a poster presentation at the Canadian Association of Occupational Therapists National Conference, Quebec, PQ.
- Ratzon, N.Z., Rosenberg, L., Bart, O., & **Jarus, T.** (February 2012). *Perceived environmental restrictions for the participation of children with mild developmental disabilities*. The 18th World Congress on Ergonomics, Recife, Brazil.
- Rozanova, J.** (April 2012). *Revolution in age relations in the late 18th century*. Paper presented at the Annual Conference of the Center for Cultural Sociology, Yale University, New Haven, CT.
- Rozanova, J., Wada, M., & Hurd Clarke, L.** (October 2012). *The global community of successful aging: Online dating in later life*. Paper presented at the conference Global Cultural Communities in Linneaus University, Vaxjo, Sweden.
- Rozanova, J.** (August 2012). *Media portrayals of successful aging in nursing homes*. Paper presented at the Annual Conference of American Sociological Association, Denver, USA.
- Rozanova, J.** (June 2012). *The rise of print media and the American Revolution in meanings of old age: from Sacred to Profane*. Paper presented at the Midterm Conference of Research Committee 16 on Social Theory of the International Sociological Association, Trento, Italy.

- Rozanova, J.** (April 2012). *Revolution in age relations in the late 18th century*. Paper presented at the Annual Conference of the Center for Cultural Sociology, Yale University, New Haven, CT.
- Rozanova, J.** (July 2012). *Emotional meanings of successful aging in history*. Paper presented at the Konstanz Meisterklasse Summer School in Social Theory, Konstanz University, Germany.
- Rushton P., Auger, C., Louise, D., & **Miller, W.C.** (June 2012). *Occupational engagement among power wheelchair users*. Paper presented at the Canadian Association of Occupational Therapists National Conference, Quebec City, PQ.
- Rushton, P.W., Demers, L., & **Miller, W.C.** (June 2012). *Reliability and validity of the Wheelchair Use Confidence Scale (WheelCon-P)*. Accepted as a podium presentation at the Canadian Association of Occupational Therapists National Conference, Quebec, PQ.
- Rushton, P.W., Demers L, & **Miller, W.C.** (June 2012). *Changes that occur among new and experienced older adult power wheelchair over six months*. Invited symposium presentation at the Canadian Association on Gerontology, Vancouver, BC.
- Rushton, P.W., Demers, L., **Miller, W.C.**, & the CanWheel Team. (October 2012). *Measurement properties of the Wheelchair Use Confidence Scale for power wheelchair users (WheelCon-P)*. Invited symposium presentation at the Canadian Association on Gerontology, Vancouver, BC.
- Sakakibara, B.M., **Miller, W.C.**, Eng, J.J., & **Backman, C.L.** (October 2012). *Confidence as a mediator in the relationship between wheelchair skills and mobility among older adults*. Poster presentation to the American Congress of Rehabilitation Medicine Annual Conference, Vancouver, BC.
- Sakakibara, B.M., **Miller, W.C.**, Eng, J.J., **Backman, C.L.**, & Routhier, F. (October 2012). *Sex as a moderator of the relationship between confidence with using a manual wheelchair and frequency of participation*. Poster presentation to the Canadian Association on Gerontology 41st Annual Scientific and Educational Meeting, Vancouver, BC. CIHR Institute of Aging doctoral trainee competition winner
- Sakakibara BM, **Miller, W.C.**, Furlan JC, von Elm E, Krassioukov A, & the SCIRE Research Team. (May 2012). *A global perspective on the frequency of the leading causes of spinal cord injury*. Rick Hansen Foundation Interdependence 2012 Conference, Vancouver, BC.
- Sakakibara, B.M., **Miller, W.C.**, & Routhier, F. (May-June 2012). *Wheelchair mobility and its relationship to confidence with using a manual wheelchair among older adults*. Poster presented at the International Federation on Ageing 11th Global Conference on Ageing, Prague, Czech Republic.
- Sakakibara, B.M., **Miller, W.C.**, Routhier, F., **Backman, C.L.**, & Eng, J.J. (November 2012). *A multiple mediation model examining the relationship between confidence in manual wheelchair users and participation*. Poster presented at the Gerontological Society of America's 65th Annual Scientific Meeting, San Diego, CA.
- Schincariol, S., Richards, L., Ghahari, S. & **Forwell, S.** (June 2012). *Living well with multiple sclerosis: A healthcare professional view*. Poster presentation to the Annual Meeting of Consortium of Multiple Sclerosis Centres (CMSC). San Diego, US.
- Simpson, L.A., Eng, J.J., **Miller, W.C.**, & **Backman, C.L.** (October 2012). *Development of a classification tool for measuring daily arm use after stroke*. Poster presentation to the American Congress of Rehabilitation Medicine, Vancouver, BC.
- Simpson, L.A., Eng, J.J., **Miller, W.C.**, & **Backman CL.** (2012). *Development of a classification tool for measuring daily arm use after stroke*. Archives of Physical Medicine and Rehabilitation. 93(10): e35.
- Suto, M.** (October 2012). *Critical theory 101*. Society for the Study of Occupation: USA, Portland, OR.

- Suto, M., Feddes, S., & MacDonald, E.J.** (October 2012). *Community gardening and well-being*. Society for the Study of Occupation: USA, Portland, OR.
- Suto, M., Feddes, S., & MacDonald, E.J.** (May 2012). Community gardening as a pathway to well-being. Canadian Society of Occupational Scientists Symposium. Edmonton, AB.
- Suto, M., Jarus, T., Hunter, V., Tighe, L., & McLean, A.** (May 2012). *Occupational participation after stroke: A qualitative study*. Canadian Society of Occupational Scientists Symposium, Edmonton, AB.
- Suto, M.,** Livingston, J.D., Hinshaw, S.P., Lapsley, S.E., Hale, S., & E.E. Michalak. (May 2012). *Stigma shrinks my bubble: A qualitative study of understandings and experiences of stigma and bipolar disorder*. UBC Department of Psychiatry Research Day. Vancouver, BC.
- Suto, M.,** Livingston, J.D., Hinshaw, S.P., Lapsley, S.E., Hale, S., & E.E. Michalak. (May 2012). *Stigma shrinks my bubble: A qualitative study of understandings and experiences of stigma and bipolar disorder*. Vancouver Coastal Health Research Institute 2012 Annual Research and Networking Event. Vancouver, BC.
- Suto, M.,** Livingston, J.D., Lapsley, S.E. & Michalak, E.E. (June 2012). *Participation in the context of stigma and bipolar disorder*. Canadian Association of Occupational Therapists conference. Quebec City, PQ.
- Thomas, M.L., Hannaford, J., Rozanova, J., & Suto, M. (June 2012). *Barriers faced by older Canadians using online dating*. Canadian Association of Occupational Therapists conference, Quebec City, PQ.
- Townsend, A.F., **Backman, C.L.,** Leese, J., Adam, P.M., & Li, L.C. (November 2012). *Using the Internet in help-seeking as illness develops in early rheumatoid arthritis*. Poster presentation, Association of Rheumatology Health Professionals Annual Scientific Meeting, Washington, DC.
- Wada, M., Backman, C., Forwell, S., Roth, W-M., & Ponzetti, J.J. (2012, October). *Tension in achieving balance in everyday life: Intensive and extensive mothering*. Society for the Study of Occupation: USA Annual Research Conference, Portland, OR.
- Wada, M., Backman, C.L., & Forwell, S.J. (May 2012). *Constructing balance in everyday life: Men's and women's ideological gender positions*, Canadian Society of Occupational Science (CSOS) Biannual conference, Edmonton, AB.
- Wacker, J., Imam, B., Anton, H., **Miller, W.C.,** & Townson, A. (April 2012). *A significant reduction in fatigue in a patient with SCI following 4 weeks of treatment with 1980 mg L-Carnitine – A case report*. Electronic poster presented at the ASIA Annual Conference.
- Wright, J., Kolakowsky-Hayner, S.A., Salter, K., Pinto Zipp, G., Heinemann, A.W., Moore, J., **Miller, W.C.,** Sullivan, J.E. (October 2012). *Outcome measurement resources for rehabilitation clinicians*. Symposium presented at the American Congress of Rehabilitation Medicine, Vancouver, BC.
- Wroblewski, T., Walker, G., & **Suto, M.** (June 2012). *Peer support as a catalyst to recovery*. Canadian Association of Occupational Therapists conference, Quebec City, PQ. (Conference Supplement)
- Zbogar, D., Eng, J.J., Krassioukov, A.V., **Miller, W.C.,** & Verrier M. (October 2012). *Arm accelerometry in individuals with spinal cord injury during inpatient rehabilitation*. Poster presented at the American Congress of Rehabilitation Medicine, Vancouver, BC.
- Zwicker, J., Mackay, M., Leaker, K., Rinhas-Larson, S., Holsti, L., & Synnes, A. (May 2012). *Feeding behavior at four months predicts neurodevelopmental impairment in preterm infants*. Poster presentation to the Pediatric Academic Society.

Books

Nicolaou-Smokoviti, L, Suenker, H., **Rozanova, J.**, & Pecca-Economou, V. (Eds.) (In press), *Citizen Participation in Social Welfare, Social Policy and Community Involvement*, Frankfurt am Main: Peter Lang Verlag.

Book Chapters

Al-Bannay, H., Jarus, T., Jongbloed, L., Li, Z., Dean, E. (2012). *Tailoring the Harvard Special Health Report on diabetes to the cultural needs of Saudi women*. Accepted for publication, September 30, 2012, In Making Sense of Chronicity. Oxfordshire, UK: Harvestway House.

Forwell, S.J. (In press). *Chapter 17: Fatigue and MS*. In Rae-Grant, R.J. Fox, F. Bethoux, (Eds.), Multiple Sclerosis and Related Disorders: Clinical Guide to Diagnosis, Medical Management, and Rehabilitation.

Forwell, S.J., Copperman, L., Hugos, C. & Ghahari, S. (In press). *Chapter 35-Neurodegenerative diseases*. In C.A. Trombly and M. Vining Radomski, (Eds.), Occupational Therapy in Physical Dysfunction, 7th Edition. Baltimore, Maryland: Lippincott Williams & Wilkins.

Forwell, S.J. & Perrin Ross, A. (2012). *Chapter 14: Self care*. In M. Finlayson, (Ed.), Multiple sclerosis rehabilitation: From impairment to participation (pp. 327-354). Taylor & Francis LLC: Florence, Kentucky.

Finlayson, M, Lexell Mansson, E. & **Forwell, S.J.** (2012). *Chapter 15: Domestic life*. In M. Finlayson, (Ed.), Multiple sclerosis rehabilitation: From impairment to participation (pp. 355-380). Taylor & Francis LLC: Florence, Kentucky.

Holsti, L., Backman, C. L., & Engel, J. (In press). *Occupational therapy*. In P. McGrath, B. Stevens, S. Walker, & W. Zempsky, (Eds.), Oxford Textbook on Pediatric Pain. Oxford, UK: Oxford University Press.

Rozanova, J. (In press). *The master of disguise: Hidden faces of ageism*. In I.da Costa (Ed.), Democratic Participation in Employment and Societal Regulation. Paris, France: ENS-Cachan.

Rozanova, J. (In press). *Social participation of older women in Canada: insights from a critical feminist perspective*. In L. Nicolaou-Smokoviti, H. Suenker, J. **Rozanova**, & V. Pecca-Economou (Eds.), Citizen Participation in Social Welfare, Social Policy and Community Involvement. Frankfurt am Main: Peter Lang Verlag.

Other Publications

Holsti, L. (2012). Occupational therapists play an important role in managing pain in infants in the neonatal intensive care unit. *OT Now*, 14(5), 8-9.

Mortenson, W.B., Auger, C., & Miller, W.C. (2012). Commentary on "ICF from an occupational therapy perspective in adult care: An integrative literature review" (Letter to Editor). *Scandinavian Journal of Occupational Therapy*, 19(5), 464-5.

Invited Presentations

Susan Forwell

"Small 'r' research, big 'R' research in MS rehabilitation." Presented at Rehabilitation Day, Consortium of MS Centers, San Diego, CA, June 2012.

"Tired of being tired: EMPIRe." Presented at GFS Monthly Rehab Rounds, GF Strong Rehabilitation Centre, Vancouver, BC, April 2012.

"Spinal cord injury energy management program (EMPIRe2)." Presented at ICORD Research Day, ICORD, Vancouver, BC, February 2012.

Liisa Holsti

"Near infrared spectroscopy: A new measure for pain assessment." Presented at B.C. Children's Hospital NICU, Vancouver, BC, 2012

"Pain assessment in the NICU." Presented at B.C. Children's Hospital, NICU, Vancouver, BC, 2012.

"Does sugar help the medicine go down?" Presented at B.C. Children's Hospital, NICU, Vancouver, BC, 2012.

"Pain in high-risk infants: Implications for the occupational therapist." Presented at Canadian Association of Occupational Therapy-Lunch and Learn Webinar, November 2012.

Susan Stanton

"Strategies working health professionals use for managing graduate studies." Presented with Mary Clark at the Centre for Health Education Scholarship Conference, UBC, Vancouver, BC, October 2, 2012.

"Research Relays – Webinars for Knowledge Translation." Presented with Mary Clark at the Centre for Health Education Scholarship Conference, UBC, Vancouver, BC, October 2, 2012.

Melinda Suto

"Exploring the contributions of a gardening program on health and well-being." Presented at Community Knowledge Translation presented, Vancouver Coastal Health, Vancouver, BC, February 9, 2012.

"The wellness study." Presented with S. Lapsley at CIHR CREST.BD Network Meeting, Toronto, ON, February 24-25, 2012.

Service to External Organizations

Catherine Backman

UBC Representative, Board of Directors, Association of Canadian Occupational Therapy University Programs

Member, Legacy Steering Committee, Canadian Arthritis Network

Member, Transition Working Group & Advisory Committee, Canadian Association of Occupational Therapists – British Columbia

Member, Academic Credentialing Council, Canadian Association of Occupational Therapists

Member, Discipline Committee, College of Occupational Therapists of British Columbia

Affiliated Investigator, Vancouver Coastal Health Research Institute

Donna Drynan

Chair of the Continuing Competence Committee, College of Occupational Therapists of BC

Member, BC Academic Health Council, Practice Education Committee

Susan Forwell

Chair, Appeal Board, Canadian Association of Occupational Therapists

Member, Advisory Board, Consortium of Multiple Sclerosis Centers

Chair, Bylaws Committee, Consortium of Multiple Sclerosis Centers

Liisa Holsti

Member, Training and Education Committee, Child and Family Research Institute

Member, Developmental Neurosciences Cluster Executive Committee, Child and Family Research Institute

UBC Centre Leader, Canadian Child Health Clinician Scientist Program-CIHR Training Initiative

Member, Evaluation and Mentorship Committee, Pain in Child Health 2-CIHR Strategic Training Initiative

Member, Training and Career Development External Advisory Committee Canadian Institutes of Health Research

Tal Jarus

President, Association of Canadian Occupational Therapy University Programs

Michael Lee

Member, Program Advisory Committee, Occupational/Physical Therapist Assistant Program, Vancouver Community College

Member, Skills Connect Health Consortium, Health Human Resources Planning, Ministry of Health

Education Representative, Board of Directors, Psychosocial Rehabilitation – BC Chapter

Member, Internationally Educated Health Professionals Advisory Group, Health Human Resources Planning, Ministry of Health

Member, National Curriculum Committee, Association of Canadian Occupational Therapy University Programs

Member, Research in Education Sub-committee, Association of Canadian Occupational Therapy University Programs

Susan Stanton

Life member, Society for Teaching and Learning in Higher Education (STLHE)

Melinda Suto

Volunteer, Homeless Count 2012, City of Vancouver.

Grant Reviews

Susan Forwell

Faculty of Medicine, UBC, Bluma Tischler Postdoctoral Fellowship

National Multiple Sclerosis Society, Pilot Grants

Vancouver Coastal Health Research Institute, Team Grant

MS Society of Canada, Clinical and Population Health Operating Grant Review Committee

Liisa Holsti

Chair, British Columbia Children's Hospital Telethon, Operating Grant Competition

External Reviewer, Canadian Institute of Health Research, Operating Grant Competition

Bill Miller

Scotland NHS Health Services and Health of the Public Predoctoral Fellowship

Melinda Suto

Adjudicator, Canadian Society of Occupational Scientists, Student Scholarship competition

Conference & Abstract Reviews

Donna Drynan

CAB IV- Interprofessional Conference- Abstract reviewer

Susan Forwell

Canadian Association of Occupational Therapists Annual Conference, Occupational Science Stream

Bill Miller

International Society of Prosthetics and Orthotics

Susan Forwell

Neurology

Canadian Journal of Occupational Therapy

Journal of Occupational Science

International Journal of MS Care

Liisa Holsti

Acta Paediatrica

Clinical Journal of Pain

European Journal of Pain

Journal of Neonatal-Perinatal Medicine

Journal of Pain and Symptom Management

Journal of Pediatrics

Journal of Pediatric Rehabilitation Medicine

Occupational Therapy International

Physical and Occupational Therapy in
Pediatrics

Pain

Pediatrics

Lyn Jongbloed

Canadian Journal of Occupational Therapy

Julia Rozanova

Ageing and Society

Sue Stanton

Journal of Distance Education

Melinda Suto

American Journal of Occupational Therapy

Journal Manuscripts, Journal of Occupational Science

Journal Manuscripts, Qualitative Health Research

Canadian Journal of Occupational Therapy



**THE UNIVERSITY
OF BRITISH COLUMBIA**

Occupational Science &
Occupational Therapy

T325 2211 Wesbrook Mall
Vancouver, BC V6T 2B

604.822.7392

www.osot.ubc.ca